



## About Our Company

MS Electronix, Inc. is a woman-owned small company with high expectations. We strive to satisfy, and with this type of dedication, we are able to support the avionics and aerospace industry as well as the needs of our military. Whether in the air or on the ground we are able to supply your organization with the highest quality customer service available. We can meet your tough schedules while providing you and your firm with top-notch customer satisfaction.

MS Electronix, Inc. specializes in supplying mil-spec and commercial connectors, contacts, tools, back-shells, adapters, relays, switches, circuit breakers, conduit, conduit end fittings and accessories.


With our knowledgeable and enthusiastic staff, combined with our extensive inventory, MS Electronix, Inc. offers amazing results. Our goal is to make your job more cost effective and efficient by offering your organization the same type of performance. In addition to our large inventory, we practice exclusively the art of sourcing obsolete and hard-to-find parts working closely with leading suppliers and manufacturers such as Amphenol, Bendix, Deutsch, Aero-Electric, Glenair, Daniels and many more.

It is a great pleasure to know that you are considering MS Electronix, Inc. as your supplier and we look forward to doing business with you and your organization. We promise professional solutions along with a friendly environment and hope you find our catalog and website useful tools.

This catalog is designed to be used as a reference tool and purchasing guide. MS Electronix, Inc. cannot be held responsible or liable for any inaccuracies or omissions in this catalog. Please contact your sales representative for pricing, delivery or email your requests to [sales@mselectronix.com](mailto:sales@mselectronix.com)

Warmest Regards,

The Staff of MS Electronix



Please be advised that MS Electronix, Inc. is not a distributor for ITT Cannon, Deutsch or Amphenol. MS Electronix, Inc. is an independent distributor that is a re-seller of these products that it purchases through factory authorized distribution as well as many other sources in the open market. MS Electronix, Inc. solely warrants these products and guarantees them to be free of defects. Warranty is limited to replacement of defective goods.

# CATALOG CONTENTS

## CIRCULAR - MILITARY SPEC

		PAGE
MIL-C-22992	MS9055x (CLASS L)	5
MIL-C-26482 SERIES 1	MS311x & MS312x	9
MIL-C-26482 SERIES 2	MS347x	12
MIL-C-26500	MS242xx	16
MIL-C-28840	MS28840/xx	20
MIL-C-38999 SERIES 1	MS27xxx ODD	22
MIL-C-38999 SERIES 2	MS27xxx EVEN	26
MIL-C-38999 SERIES 3	D38999/2x	30
MIL-C-38999 SERIES 4	D38999/40 thru /46-	33
MIL-C-5015	MS310x	39
MIL-C-5015G	MS345x	44
MIL-C-81511 SERIES 1 & 2	M81511/2x & M81511/0x	49
MIL-C-81511 SERIES 3 & 4	M81511/4x & M81511/5x	52
MIL-C-83723 SERIES 2 & 3	M83723/xx	55

## CIRCULAR - COMMERCIAL

		PAGE
DM	DEUTSCH	59
DS	DEUTSCH	62
RSM	DEUTSCH	64
KO/KM	CANNON	66
STANDARD K	CANNON	68

## RECTANGULAR / RACK & PANEL

		PAGE
ARINC 404	DPX/DPX2	71
ARINC 600	BKAD/TCAS	75
DPA	CANNON	78
DPD/DPD2	CANNON	82
MIL-C-83733	DPKA/DPKB	86
MIL-C-24308	D-SUB MINIATURE	89

## STANDARD TOOLS

		PAGE
MS24256	METAL INS/RMV	92
MS27495	TWEEZER METAL INS/RMV	92
M81969	PLASTIC INS/RMV	92
M22520	CRIMPER/TURRET	92

# LINE CARD

MIL-SPEC	MS PART NUMBER	DISCRIPTION
MIL-C-22992.....	MS90555 thru MS90558-	All Connectors & Accessories
MIL-C-26482 I..	MS3110 thru MS3119-	All Classes - Solder Contacts
MIL-C-26482 I..	MS3120 thru MS3127-	All Classes - Crimp Contacts
MIL-C-26482 II..	MS3470 thru MS3476-	Class L & W
MIL-C-26500.....	MS24264 thru MS24266-	Bayonet & Threaded
	BACC45F, BACC63BP/BV-	C0909, CN0966, CN0967
MIL-C-28876.....	M28876/1- thru /29-	All Classes
MIL-C-28840.....	M28840/1x thru /30-	All Classes Connectors & Accessories
MIL-C-83723.....	M83723/01 thru /43-	All Classes
MIL-C-5015.....	MS3100 thru MS3108-	All Classes
MIL-C-5015G....	MS3400 thru MS3412-	Class D, DS, K, L, U & W (Front Release)
	MS3450 thru MS3459-	Class K,L, U, W, T & KS (Rear Release)
MIL-C-38999 I..	MS27466 thru MS27656-	
MIL-C-38999 II..	MS27472 thru MS27508-	
MIL-C-38999 III.	D38999/20 thru /26-	All Classes
MIL-C-38999 IV.	D38999/40 thru /46-	All Classes
MIL-C-81511.....	M81511/-	Connectors & Accessories
MIL-C-25955.....	KM,KO, MS24234 thru MS24238-	
MIL-C-85049.....	M85049/XX, MS3057,	
	MS3416 thru MS3418, MS27291, MS27295	
MIL-C-39029.....	M39029 Contacts-	All Dash Numbers
M22520/X-XX...	M22520, MS24256, MS27495	
	MS3191, M81969-	Tools
MIL-C-24308....	M24308 D	Subminiature Connectors & Accessories
MIL-C-81659.....	ARINC 404, DPD, DPX, DPXA, DPX,	
	DPXB MA/ME, DPXB NA/NE, DSX	
	ARINC 600 BKAD/E/F/C, NIC, NSX, S600	
M29184/XX .....	Power Distribution Cord/Cable Assemblies	

We can also provide power distribution cord/cable assemblies, conduit, conduit end fittings and adapters, relays, switches and circuit breakers.

**MS ELECTRONIX**  
 2695 Dobbs Road, St. Augustine, FL 32086  
[www.mselectronix.com](http://www.mselectronix.com)  
[sales@mselectronix.com](mailto:sales@mselectronix.com)

# MIL-C-22992 CLASS L ORDERING GUIDE

MS 9 0 5 5 7 | C 4 4 4 1 2 | S Z

## BASIC PART NUMBER

- MS90555 • WALL MOUNT RECEPTACLE
- MS90556 • STRAIGHT PLUG
- MS90557 • STRAIGHT PLUG WITHOUT COUPLING RING
- MS90558 • WALL MOUNT RECEPTACLE WITH COUPLING RING

## SHELL FINISH

- C • CONDUCTIVE FOR GROUNDED ASSEMBLIES

## SHELL SIZE

- 28 • 40 AMP CURRENT RATING
- 32 • 60 SMP CURRENT RATING
- 44 • 100 AMP CURRENT RATING
- 52 • 200 AMP CURRENT RATING

## KEYWAY POSITION

- N
- 1
- 4
- 5
- 6

## INSERT ARRANGEMENT

SEE CHART

## CONTACT STYLE

- P • PIN
- S • SOCKET

## POLARIZATION

- BLANK • NORMAL
- W
- X
- Y
- Z

# MIL-C-22992 CLASS L INSERT CHART

INSERT ARRANGEMENT	TOTAL CONTACTS	NEUTRAL 6 GA	GROUND 6 GA	NEUTRAL 4 GA	GROUND 4 GA	NEUTRAL 1/0 GA	GROUND 1/0 GA	NEUTRAL 4/0 GA	GROUND 4/0 GA
28 - 12	5	3	2						
28 - 13	5	3	2						
32 - 06	4			2	2				
32 - 07	4			2	2				
32 - 12	5		1	3	1				
32 - 13	5		1	3	1				
44 - 06	6		3			2	1		
44 - 12	8		4			3	1		
44 - 13	8		4			3	1		
44 - 50 *	4					3	1		
44 - 51	4					3	1		
44 - 52 **	4					3	1		
44 - 56 **	4					3	1		
52 - 12	8				4		3	1	
52 - 13	8				4		3	1	

\*AVAILABLE IN MS90555 & MS90558 ONLY

\*\*AVAILABLE IN MS90556 ONLY

# MIL-C-22992 CLASS L ACCESSORIES

## CONTACTS DESCRIPTION TYPE

### (MS90556,58)

M39029/48-317	..... 6 GA PIN	..... POWER
M39029/48-318	..... 6 GA PIN	..... NEUTRAL
M39029/48-319	..... 6 GA PIN	..... GROUND
M39029/48-320	..... 4 GA PIN	..... POWER
M39029/48-321	..... 4 GA PIN	..... NEUTRAL
M39029/48-322	..... 4 GA PIN	..... GROUND
M39029/48-323	..... 1/0 GA PIN	..... POWER
M39029/48-324	..... 1/0 GA PIN	..... NEUTRAL
M39029/48-327	..... 4/0 GA PIN	..... POWER
M39029/48-328	..... 4/0 GA PIN	..... NEUTRAL

### (MS90555,57)

M39029/49-329	..... 6 GA SKT	..... NEUTRAL
M39029/49-330	..... 6 GA SKT	..... GROUND
M39029/49-331	..... 4 GA SKT	..... POWER
M39029/49-332	..... 4 GA SKT	..... GROUND
M39029/49-333	..... 1/0 GA SKT	..... POWER
M39029/49-335	..... 4/0 GA SKT	..... POWER

## TOOLS DESCRIPTION

M81969/27-06	..... INS/RMV 6 GA
M81969/27-05	..... INS/RMV 4 GA
M81969/27-03	..... INS/RMV 1/0 GA
M81969/27-01	..... INS/RMV 4/0 GA
M22520/23-01	..... CRIMPER
M22520/23-10	..... LOCATOR 6 GA
M22520/23-03	..... DIE 6 GA
M22520/23-12	..... LOCATOR 4 GA
M22520/23-04	..... DIE 4 GA
M22520/23-14	..... LOCATOR 1/0 GA
M22520/23-05	..... DIE 1/0 GA
M22520/23-16	..... LOCATOR 4/0 GA
M22520/23-07	..... DIE 4/0 GA

## CONTACT BUSHINGS I.D. O.D. +-.002 +-.002

MS3348-1-2L	..... 359	..... 396
MS3348-4-6L	..... 225	..... 272
MS3348-6-8L	..... 185	..... 225
MS3348-6-9L	..... 155	..... 255
MS3348-1-6L	..... 225	..... 396
MS3348-4-8L	..... 185	..... 272

# MIL-C-22992 CLASS L ACCESSORIES CONTINUED

## CAP & CHAINS      SHELL SIZE      CHAIN LENGTH

### (MS90555,57)

MS90563-3C .....	32 .....	4.50"
MS90563-4C .....	32 .....	6.00"
MS90563-7C .....	44 .....	7.50"
MS90563-11C .....	52 .....	7.50"

### (MS90556,58)

MS90564-3C .....	32 .....	6.00"
MS90564-4C .....	32 .....	7.50"
MS90564-7C .....	44 .....	8.50"
MS90564-11C .....	52 .....	8.50"

### CONTACT INFORMATION

### CRIMP & EXTRACTION TOOLS\*\*\*

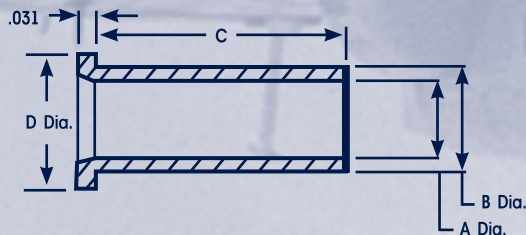
INSERT ARRANGEMENT	QTY	CONTACT	SIZE	PIN CATALOG NO.	SOCKET CATALOG NO.	M22520/ BASIC CRIMPING TOOLS	M22520/ LOCATOR	M22520/ DIC	M81969/ REMOVAL TOOL
32-06	2	A,R	4	48-320	49-331	23-01	23-12	23-04	27-05
32-07	2	N,G	4N	48-321	49-331	23-01	23-12	23-04	27-05
32-12	3	A,B,C	4	48-320	49-331	23-01	23-12	23-04	27-05
32-13	1	N	4N	48-321	49-331	23-01	23-12	23-01	27-05
	1	G	6N	48-318	49-329	23-01	23-10	23-03	27-06
	2	A,B	1/0	48-323	49-333	23-01	23-14	23-05	27-03
44-06	1	N	1/0N	48-324	49-333	23-01	23-14	23-05	27-03
	3	G1,G2,G3	6G	48-319	49-330	23-01	23-10	23-03	27-06
	3	A,B,C	1/0	48-323	49-333	23-01	23-14	23-05	27-03
44-12	1	N	1/0N	48-324	49-333	23-01	23-14	23-05	27-03
44-13	4	G1,G2,G3,G4	6G	48-319	49-330	23-01	23-10	23-03	27-06
44-50* 44-51	3	A,B,C	1/0	48-323	49-333	23-01	23-14	23-05	27-03
44-52** 44-56**	1	G	1/0N	48-324	49-333	23-01	23-14	23-05	27-03
	3	A,B,C	4/0	48-327	49-335	23-01	23-16	23-07	27-01
52-12	1	N	4/0N	48-328	49-335	23-01	23-16	23-07	27-01
52-13	4	G1,G2,G3,G4	4G	48-322	49-332	23-01	23-12	23-04	27-05

\*44-50 for MS 90555 and MS 90558 only

\*\*44-52 & 44-56 for MS 90556 only

### CONTACT BUSHING

#### CONTACT BUSHING\*- MS 3348



\*When required by insert arrangement, appropriate size and quantity of bushings are supplied (unassembled) with the connector and contacts.

BURNDY PART NO.	MS PART NO.	A-DIA +.002 -.003	B-DIA +.002 -.003	C +.015	D DIA +.015
-----------------	-------------	-------------------------	-------------------------	------------	----------------

B348-01-1 ..	MS3348-1-2L	.359	..... 396	..... .700	..... .516
B348-01-3 ..	MS3348-4-6L	.225	..... 272	..... .700	..... .344
B348-01-4 ..	MS3348-6-8L	.185	..... 225	..... .700	..... .297
B348-01-5 ..	MS3348-6-9L	.155	..... 225	..... .700	..... .297
B348-01-6 ..	MS3348-1-6L	.225	..... 396	..... .700	..... .516
B348-01-10 ..	MS3348-4-8L	.185	..... 272	..... .700	..... .344

WIRE SIZE (Ref.)

CONTACT WIRE BARREL SIZE (Ref.)



# MIL-C-26482 SERIES 1 ORDERING GUIDE

M S 3 1 2 6 F 1 8 - 3 2 S W

## BASIC PART NUMBER

(SOLDER)

MS3110 – WALL MOUNT RECEPTACLE

MS3111 – IN-LINE RECEPTACLE

MS3112 – BOX MOUNT RECEPTACLE

MS3114 – JAM NUT RECEPTACLE

MS3116 – STRAIGHT PLUG

(CRIMP)

MS3120 – WALL MOUNT RECEPTACLE

MS3121 – IN-LINE RECEPTACLE

MS3122 – BOX MOUNT RECEPTACLE

MS3124 – JAM NUT RECEPTACLE

MS3126 – STRAIGHT PLUG

## CLASS

E – ENVIRONMENTAL SEAL W/GROMMET NUT

F – ENVIRONMENTAL SEAL W/CABLE CLAMP

P – POTTING CUP

J – PRESSURE BACKSHELL W/CABLE CLAMP

## SHELL SIZE

8 – 24

## INSERT ARRANGEMENT

SEE CHART

## CONTACT STYLE

P – PIN

S – SOCKET

## POLARIZATION

BLANK – NORMAL

W

X

Y

Z

# MIL-C-26482 SERIES 1 INSERT CHART

INSERT ARRANGEMENT	TOTAL CONTACTS	20 GA	16 GA	12 GA
8 - 2*	2	2		
8 - 3*	3	3		
8 - 33*	3	3		
8 - 4*	4	4		
10 - 6	6	6		
12 - 3	3		3	
12 - 10	10	10		
14 - 5	5		5	
14 - 12	12	8	4	
14 - 15	15	14	1	
14 - 18	18	18		
14 - 19	19	19		
16 - 23	23	22	1	
16 - 26	26	26		
18 - 8	8			8
8 - 11	11		11	
18 - 32	32	32		
20 - 16	16		16	
20 - 39	39	37	2	
20 - 41	41	41		
22 - 55	55	55		
24 - 61	61	61		

\*SOLDER ONLY  
\*\*CRIMP ONLY

# MIL-C-26482 SERIES 1 ACCESSORIES

## CONTACTS

## DESCRIPTION

M39029/31-240 .....	20 GA PIN
M39029/31-228 .....	16 GA PIN
M39029/31-234 .....	12 GA PIN
M39029/32-259 .....	20 GA SKT
M39029/32-247 .....	16 GA SKT
M39029/32-253 .....	12 GA SKT

## TOOLS

## DESCRIPTION

MS24256A20 .....	20 GA INS
MS24256A16 .....	16 GA INS
MS24256A12 .....	12 GA INS
MS24256R20 .....	20 GA RMV
MS24256R16 .....	16 GA RMV
MS24256R12 .....	12 GA RMV
M22520/1-01 .....	CRIMPER
M22520/1-02 .....	TURRET

## PLUG

## CAP & CHAINS

## SHELL SIZE

MS3180-8C .....	8
MS3180-10C .....	10
MS3180-12C .....	12
MS3180-14C .....	14
MS3180-16C .....	16
MS3180-18C .....	18
MS3180-20C .....	20
MS3180-22C .....	22
MS3180-24C .....	24

## RECEPTACLE

## CAP & CHAINS

## SHELL SIZE

MS3181-8C .....	8
MS3181-10C .....	10
MS3181-12C .....	12
MS3181-14C .....	14
MS3181-16C .....	16
MS3181-18C .....	18
MS3181-20C .....	20
MS3181-22C .....	22
MS3181-24C .....	24

# MIL-C-26482 SERIES 2 ORDERING GUIDE

M S 3 4 7 6 | L 1 0 - 6 S W

## BASIC PART NUMBER

MS3470 – WALL MOUNT RECEPTACLE  
MS3471 – IN-LINE RECEPTACLE  
MS3472 – BOX MOUNT RECEPTACLE  
MS3474 – JAM NUT RECEPTACLE  
MS3475 – STRAIGHT PLUG, EMI/RFI  
MS3476 – STRAIGHT PLUG

## SHELL FINISH

A – BLACK ANODIZE  
L – ELECTROLESS NICKEL, FLUID RESISTANT  
W – OLIVE DRAB, FLUID RESISTANT

## SHELL SIZE

8 – 24

## INSERT ARRANGEMENT

SEE CHART

## CONTACT STYLE

P – PIN  
S – SOCKET

## POLARIZATION

BLANK – NORMAL  
W  
X  
Y  
Z

# MIL-C-26482 SERIES 2 INSERT CHART

INSERT ARRANGEMENT	TOTAL CONTACTS	20 GA	16 GA	12 GA
8 - 33	3	3		
8 - 98	3	3		
10 - 6	6	6		
12 - 3	3		3	
12 - 8	8	8		
12 - 10	10	10		
14 - 4	4			4
14 - 5	5		5	
14 - 12	12	8	4	
14 - 15	15	14	1	
14 - 18	18	18		
14 - 19	19	19		
16 - 8	8		8	
16 - 23	23	22	1	
16 - 26	26	26		
18 - 8	8			8
18 - 11	11		11	
18 - 32	32	32		
20 - 16	16		16	
20 - 39	39	37	2	
20 - 41	41	41		
22 - 21	21		21	
22 - 41	41	27	14	
22 - 55	55	55		
24 - 19	19			19
24 - 31	31		31	
24 - 61	61	61		

# MIL-C-26482 SERIES 2 ACCESSORIES

## CONTACTS

## DESCRIPTION

M39029/5-115 .....	20 GA SKT
M39029/4-110 .....	20 GA PIN
M39029/5-116 .....	16 GA SKT
M39029/4-111 .....	16 GA PIN
M39029/5-118 .....	12 GA SKT
M39029/4-113 .....	12 GA PIN

## TOOLS

## DESCRIPTION

M81969/14-02 .....	20 GA INS/RMV
M81969/14-03 .....	16 GA INS/RMV
M81969/14-04 .....	12 GA INS/RMV
M22520/1-01 .....	CRIMPER
M22520/1-02 .....	TURRET

## STRAIGHT BACKSHELLS

## ALTERNATE

## SHELL SIZE

M85049/52-1-8*	MS3417-8*	8
M85049/52-1-10*	MS3417-10*	10
M85049/52-1-12*	MS3417-12*	12
M85049/52-1-14*	MS3417-14*	14
M85049/52-1-16*	MS3417-16*	16
M85049/52-1-18*	MS3417-18*	18
M85049/52-1-20*	MS3417-20*	20
M85049/52-1-22*	MS3417-22*	22
M85049/52-1-24*	MS3417-24*	24

\*SEE FINISH TABLE

## 90 DEGREE BACKSHELLS

## ALTERNATE

## SHELL SIZE

M85049/51-1-8*	MS3418-8*	8
M85049/51-1-10*	MS3418-8*	10
M85049/51-1-12*	MS3418-8*	12
M85049/51-1-14*	MS3418-8*	14
M85049/51-1-16*	MS3418-8*	16
M85049/51-1-18*	MS3418-8*	18
M85049/51-1-20*	MS3418-8*	20
M85049/51-1-22*	MS3418-8*	22
M85049/51-1-24*	MS3418-24*	24

\*SEE FINISH TABLE

# MIL-C-26482 SERIES 2 ACCESSORIES CONTINUED

## GROMMET NUTS

## ALTERNATE

## SHELL SIZE

M85049/31-1-8*	MS3416-8E*	8
M85049/31-1-10*	MS3416-10E*	10
M85049/31-1-12*	MS3416-12E*	12
M85049/31-1-14*	MS3416-14E*	14
M85049/31-1-16*	MS3416-16E*	16
M85049/31-1-18*	MS3416-18E*	18
M85049/31-1-20*	MS3416-20E*	20
M85049/31-1-22*	MS3416-22E*	22
M85049/31-1-24*	MS3416-24E*	24

\*SEE FINISH TABLE

## RECEPTACLE CAP & CHAINS

## SHELL SIZE

MS3181-8C	8
MS3181-10C	10
MS3181-12C	12
MS3181-14C	14
MS3181-16C	16
MS3181-18C	18
MS3181-20C	20
MS3181-22C	22
MS3181-24C	24

## PLUG CAP & CHAINS

## SHELL SIZE

MS3180-8C	8
MS3180-10C	10
MS3180-12C	12
MS3180-14C	14
MS3180-16C	16
MS3180-18C	18
MS3180-20C	20
MS3180-22C	22
MS3180-24C	24

## FINISH TABLE M85049/31, 51,52

W	A	O.D. 500HR SALT SPRAY
-	C	OLIVE DRAB
N	N	ELECTROLESS NICKEL
A	G	BLACK ANODIZE

# MIL-C-26500 ORDERING GUIDE

M S 2 4 2 6 6 R 2 2 B 5 5 S 8

## BASIC PART NUMBER

MS24264 - WALL MOUNT RECEPTACLE  
MS24266 - STRAIGHT PLUG

## CLASS

R - ALUMINUM BLACK ANODIZED

## SHELL SIZE

10 - 24

## COMPLER STYLE

B - BAYONET  
T - THREADED

## CONTACT STYLE

P - PIN  
S - SOCKET

## POLARIZATION

N - NORMAL  
6  
7  
8  
9  
10



# MIL-C-26500 INSERT CHART

INSERT ARRANGEMENT	TOTAL CONTACTS	20 GA	16 GA	12 GA	COAX
10 - 5	5	5			
10 - 20	2		2		
12 - 3	3		3		
12 - 12	12	12			
14 - 3	3		2		1
14 - 4	4			4	
14 - 7	7		7		
14 - 12	12	9	3		
14 - 15	15	15			
16 - 10	10		10		
16 - 24	24	24			
18 - 8	8			8	
18 - 11	11		10		1
18 - 14	14		14		
18 - 31	31	31			
20 - 16	16		16		
20 - 25	25	19		6	
20 - 39	39	37	2		
20 - 41	41	41			
22 - 12	12			12	
22 - 19	19			19	
22 - 32	32	26		6	
22 - 55	55	55			
24 - 43	43	23	20		
24 - 61	61	61			

# MIL-C-26500 ACCESSORIES

## CONTACTS

## DESCRIPTION

M39029/31-241	20 GA PIN
M39029/31-229	16 GA PIN
M39029/31-235	12 GA PIN
M39029/32-260	20 GA SKT
M39029/32-248	16 GA SKT
M39029/32-254	12 GA SKT

## TOOLS

## DESCRIPTION

MS24256A20	20 GA INS
MS24256A16	16 GA INS
MS24256A12	12 GA INS
MS24256R20	20 GA RMV
MS24256R16	16 GA RMV
MS24256R12	12 GA RMV
M22520/1-01	CRIMPER
M22520/1-02	TURRET

## STRAIGHT BACKSHELL

## SHELL SIZE

MS27291-1	10
MS27291-2	12
MS27291-3	14
MS27291-4	16
MS27291-5	18
MS27291-14	20
MS27291-6	22
MS27291-15	24

## 90 DEGREE BACKSHELLS

## SHELL SIZE

MS27559-2	10
MS27559-3	12
MS27559-4	14
MS27559-5	16
MS27559-6	18
MS27559-7	20
MS27559-8	22
MS27559-9	24

## QUICK-TIE BACKSHELLS

## SHELL SIZE

GTR01C-10	10
GTR01C-12	12
GTR01C-14	14
GTR01C-16	16
GTR01C-18	18
GTR01C-20	20
GTR01C-22	22
GTR01C-24	24

# MIL-C-26500 ACCESSORIES CONTINUED

## PLUG-BAYONET CAP & CHAINS

### SHELL SIZE

MS27293-1	10
MS27293-2	12
MS27293-3	14
MS27293-4	16
MS27293-5	18
MS27295-8	20
MS27295-6	22
MS27295-9	24

## RECEPTACLE-BAYONET CAP & CHAINS

### SHELL SIZE

MS27295-1	10
MS27295-2	12
MS27295-3	14
MS27295-4	16
MS27295-5	18
MS27295-8	20
MS27295-6	22
MS27295-9	24

## PLUG-THREADED CAP & CHAINS

### SHELL SIZE

MS27292-1	10
MS27292-2	12
MS27292-3	14
MS27292-4	16
MS27292-5	18
MS27292-8	20
MS27292-6	22
MS27292-9	24

## RECEPTACLE-THREADED CAP & CHAINS

### SHELL SIZE

MS27294-1	10
MS27294-2	12
MS27294-3	14
MS27294-4	16
MS27294-5	18
MS27294-8	20
MS27294-6	22
MS27294-9	24

# MIL-C-28840 ORDERING GUIDE

M 2 8 8 4 / 1 6 A B 1 P 1

## BASIC PART NUMBER

M28840/

## SHELL SIZE

10 - WALL MOUNT RECEPTACLE  
11 - IN-LINE RECEPTACLE  
12 - BOX MOUNT RECEPTACLE  
14 - JAM NUT RECEPTACLE  
16 - STRAIGHT PLUG

## CLASS

A - ALUMINUM ALLOY, OLIVE FINISH

## SHELL SIZE

A	B	C	D	E	F	G	H	J
11	13	15	17	19	23	25	29	33

## INSERT ARRANGEMENT

SEE CHART

## CONTACT STYLE

P - PIN  
S - SOCKET

## POLARIZATION

1  
2  
3  
4  
5  
6

# MIL-C-28840 INSERT CHART

INSERT ARRANGEMENT	SHELL SIZE	TOTAL CONTACTS 20 GA
A-1	11	7
B-1	13	12
C-1	15	21
D-1	17	31
E-1	19	42
F-1	23	64
G-1	25	92
H-1	29	121
J-1	33	155

## MIL-C-28840 ACCESSORIES

CONTACTS	DESCRIPTION
M39029/83-508	20-20 PIN
M39029/84-509	20-20 SKT
M39029/83-450	20-22 PIN
M39029/84-452	20-22 SKT
M39029/83-451	20-28 PIN
M39029/84-453	20-28 SKT

TOOLS	DESCRIPTION
M81969/33-01	INS
M81969/34-01	RMV
M22520/34-01	CRIMPER
M22520/34-02	TURRET

STRAIGHT BACKSHELLS	SHELL SIZE
M28840/1AW	11
M28840/1BW	13
M28840/1CW	15
M28840/1DW	17
M28840/1EW	19
M28840/1FW	23
M28840/1GW	25
M28840/1HW	29
M28840/1JW	33

# MIL-C-38999 SERIES 1 ORDERING GUIDE

M S 2 7 4 6 7 T 1 5 B 3 5 P A

## BASIC PART NUMBER

MS27466 - WALL MOUNT RECEPTACLE  
MS27467 - STRAIGHT PLUG, EMI GROUNDING  
MS27468 - JAM-NUT RECEPTACLE  
MS27496 - BOX MOUNT RECEPTACLE  
MS27505 - BOX MOUNT RECEPTACLE, BACK PANEL MOUNTING  
MS27656 - WALL MOUNT RECEPTACLE, BACK PANEL MOUNTING

## CLASS

T - ENVIRONMENTAL WITH REAR ACCESSORY TEETH  
E - ENVIRONMENTAL W/GROMMET NUT (INACTIVE)

## SHELL SIZE

9 25 (ODD NUMBERS)

## SHELL FINISH

A - BRIGHT CADMIUM (INACTIVE)  
B - OLIVE DRAB CADMIUM  
F - ELECTROLESS NICKEL

## INSERT ARRANGEMENT

SEE CHART

## CONTACT STYLE

P - PIN  
S - SOCKET  
A - PIN, LESS CONTACTS  
B - SOCKET, LESS CONTACTS

## POLARIZATION

N - NORMAL  
A  
B  
C  
D

# MIL-C-38999 SERIES 1 INSERT CHART

INSERT ARRANGEMENT	TOTAL CONTACTS	22D GA	20 GA	16 GA	12 GA
9 - 35	6	6			
9 - 98	3		3		
11 - 5	5		5		
11 - 35	13	13			
11 - 98	6		6		
11 - 99	7		7		
13 - 4	4			4	
13 - 8	8		8		
13 - 35	22	22			
13 - 98	10		10		
15 - 5	5			5	
15 - 15	15		14	1	
15 - 18	18		18		
15 - 19	19		19		
15 - 35	37	37			
15 - 97	12		8	4	
17 - 6	6				6
17 - 8	8			8	
17 - 26	26		26		
17 - 35	55	55			
17 - 99	23		21	2	
19 - 11	11			6	
19 - 32	32		32		
19 - 35	66	66			
21 - 11	11				11
21 - 16	16			16	
21 - 35	79	79			
21 - 39	39		37	2	
21 - 41	41		41		
23 - 21	21			21	
23 - 35	100	100			
23 - 53	53		53		
23 - 55	55		55		
25 - 19	19				19
25 - 24	24			12	12
25 - 29	29			29	
25 - 35	128	128			
25 - 43	43		23	20	
25 - 61	61		61		

# MIL-C-38999 SERIES 1 ACCESSORIES

## CONTACTS

## DESCRIPTION

M39029/58-360	22D GA PIN
M39029/56-348	22D GA SKT
M39029/58-363	20 GA PIN
M39029/56-351	20 GA SKT
M39029/58-364	16 GA PIN
M39029/56-353	16 GA SKT
M39029/58-365	12 GA PIN
M39029/56-353	12 GA SKT

## TOOLS

## DESCRIPTION

M81969/14-01	22D GA INS/RMV
M81969/14-02	20 GA INS/RMV
M81969/14-03	16 GA INS/RMV
M81969/14-04	12 GA INS/RMV
M22520/2-01	CRIMPER 22D GA
M22520/2-07	TURRET 22D GA
M22520/1-01	CRIMPER 20/16/12 GA
M22520/1-04	TURRET 20/16/12 GA

## STRAIGHT BACKSHELLS

## ALTERNATE

## SHELL SIZE

M85049/49-2-08*	MS27506*8-2	8
M85049/49-2-10*	MS27506*10-2	10
M85049/49-2-12*	MS27506*12-2	12
M85049/49-2-14*	MS27506*14-2	14
M85049/49-2-16*	MS27506*16-2	16
M85049/49-2-18*	MS27506*18-2	18
M85049/49-2-20*	MS27506*20-2	20
M85049/49-2-22*	MS27506*22-2	22
M85049/49-2-24*	MS27506*24-2	24

\*SEE FINISH TABLE

## STRAIGHT BACKSHELLS

## ALTERNATE

## SHELL SIZE

M85049/47*08	MS27507*8	8
M85049/47*10	MS27507*10	10
M85049/47*12	MS27507*12	12
M85049/47*14	MS27507*14	14
M85049/47*16	MS27507*16	16
M85049/47*18	MS27507*18	18
M85049/47*20	MS27507*20	20
M85049/47*22	MS27507*22	22
M85049/47*24	MS27507*24	24

\*SEE FINISH TABLE





# MIL-C-38999 SERIES 1 ACCESSORIES CONTINUED

**FINISH TABLE**  
M85049/49,47

MS27506,7

FINISH

-  
W  
A  
N

A  
B  
C  
F

BRIGHT CAD  
OLIVE DRAB  
BLACK ANODIZE  
ELECTROLESS NICKEL

# MIL-C-38999 SERIES 2 ORDERING GUIDE

M S 2 7 4 7 3 | T | 1 4 | B | 3 5 | S | B

## BASIC PART NUMBER

MS27472 - WALL MOUNT RECEPTACLE  
MS27473 - STRAIGHT PLUG  
MS27474 - JAM-NUT RECEPTACLE  
MS27484 - STRAIGHT PLUG, EMI GROUNDING  
MS27497 - WALL MOUNT RECEPTACLE, BACK PANEL MOUNT  
MS27499 - BOX MOUNT RECEPTACLE  
MS27508 - BOX MOUNT RECEPTACLE, BACK PANEL MOUNT

## CLASS

T - ENVIRONMENTAL WITH REAR ACCESSORY TEETH  
E - ENVIRONMENTAL W/GROMMET NUT (INACTIVE)

## SHELL SIZE

8 - 24 (EVEN NUMBERS)

## SHELL FINISH

A - BRIGHT CADMIUM (INACTIVE)  
B - OLIVE DRAB CADMIUM  
F - ELECTROLESS NICKEL

## INSERT ARRANGEMENT

SEE CHART

## CONTACT STYLE

P - PIN  
S - SOCKET  
A - PIN, LESS CONTACTS  
B - SOCKET, LESS CONTACTS

## POLARIZATION

N - NORMAL  
A  
B  
C  
D

# MIL-C-38999 SERIES 2 ORDERING GUIDE

INSERT ARRANGEMENT	TOTAL CONTACTS	22D GA	20 GA	16 GA	12 GA
8 - 35	6	6			
8 - 98	3		3		
10 - 5	5		5		
10 - 35	13	13			
10 - 98	6		6		
10 - 99	7		7		
12 - 4	4			4	
12 - 8	8		8		
12 - 35	22	22			
12 - 98	10		10		
14 - 5	5			5	
14 - 15	15		14	1	
14 - 18	18		18		
14 - 19	19		19		
14 - 35	37	37			
14 - 97	12		8	4	
16 - 6	6				6
16 - 8	8			8	
16 - 26	26		26		
16 - 35	55	55			
16 - 99	23		21	2	
18 - 11	11			6	
18 - 32	32		32		
18 - 35	66	66			
20 - 11	11				11
20 - 16	16			16	
20 - 35	79	79			
20 - 39	39		37	2	
20 - 41	41		41		
22 - 21	21			21	
22 - 35	100	100			
22 - 53	53		53		
22 - 55	55		55		
24 - 19	19				19
24 - 24	24			12	12
24 - 29	29			29	
24 - 35	128	128			
24 - 43	43		23	20	
24 - 61	61		61		

# MIL-C-38999 SERIES 2 ACCESSORIES

## CONTACTS

## DESCRIPTION

M39029/58-360	22D GA PIN
M39029/57-354	22D GA SKT
M39029/58-363	20 GA PIN
M39029/57-357	20 GA SKT
M39029/58-364	16 GA PIN
M39029/57-358	16 GA SKT
M39029/58-365	12 GA PIN
M39029/57-359	12 GA SKT

## TOOLS

## DESCRIPTION

M81969/14-01	22D GA INS/RMV
M81969/14-02	20 GA INS/RMV
M81969/14-03	16 GA INS/RMV
M81969/14-04	12 GA INS/RMV
M22520/2-01	CRIMPER 22D GA
M22520/2-07	TURRET 22D GA
M22520/1-01	CRIMPER 20/16/12 GA
M22520/1-04	TURRET 20/16/12 GA

## STRAIGHT BACKSHELLS

## ALTERNATE

## SHELL SIZE

M85049/49-2-08*	MS27506*8-2	8
M85049/49-2-10*	MS27506*10-2	10
M85049/49-2-12*	MS27506*12-2	12
M85049/49-2-14*	MS27506*14-2	14
M85049/49-2-16*	MS27506*16-2	16
M85049/49-2-18*	MS27506*18-2	18
M85049/49-2-20*	MS27506*20-2	20
M85049/49-2-22*	MS27506*22-2	22
M85049/49-2-24*	MS27506*24-2	24

\*SEE FINISH TABLE

## STRAIGHT BACKSHELLS

## ALTERNATE

## SHELL SIZE

M85049/47*08	MS27507*8	8
M85049/47*10	MS27507*10	10
M85049/47*12	MS27507*12	12
M85049/47*14	MS27507*14	14
M85049/47*16	MS27507*16	16
M85049/47*18	MS27507*18	18
M85049/47*20	MS27507*20	20
M85049/47*22	MS27507*22	22
M85049/47*24	MS27507*24	24

\*SEE FINISH TABLE

# MIL-C-38999 SERIES 2 ACCESSORIES

CONTINUED

**FINISH TABLE**  
**M85049/49,47**

**MS27506,7**

**FINISH**

-	A	BRIGHT CAD
W	B	OLIVE DRAB
A	C	BLACK ANODIZE
N	F	ELECTROLESS NICKEL



# MIL-C-38999 SERIES 3 ORDERING GUIDE

D 3 8 9 9 9 / 2 6 W D 3 5 S N

## BASIC PART NUMBER

D38999 - SERIES 3

## SHELL STYLE

/20 - WALL MOUNT RECEPTACLE  
/24 - JAM NUT RECEPTACLE  
/26 - STRAIGHT PLUG

## SHELL FINISH

F - ELECTROLESS NICKEL  
W - OLIVE DRAB CADMIUM

## SHELL SIZE

A	B	C	D	E	F	G	H	J
9	11	13	15	17	19	21	23	25

## INSERT ARRANGEMENT

SEE CHART

## CONTACT STYLE

P - PIN  
S - SOCKET  
A - PIN, LESS CONTACTS  
B - SOCKET, LESS CONTACTS

## POLARIZATION

N - NORMAL  
6  
7  
8  
9  
10

# MIL-C-38999 SERIES 3 INSERT CHART

INSERT ARRANGEMENT	SHELL SIZE	TOTAL CONTACTS	22D GA	20 GA
A35	9	6	6	
A98	9	3		3
B35	11	13	13	
B98	11	6		6
C35	13	22	22	
C98	13	10		10
D18	15	18		18
D19	15	19		19
D35	15	37	37	
E26	17	26		26
E35	17	55	55	
F35	19	66	66	
G35	21	79	79	
G41	21	41		41
H35	23	100	100	
J35	25	128	128	
J61	25	61		61

# MIL-C-38999 SERIES 3 ACCESSORIES

## CONTACTS

## DESCRIPTION

M39029/58-360	22D GA PIN
M39029/56-348	22D GA SKT
M39029/58-363	20 GA PIN
M39029/56-351	20 GA SKT

## TOOLS

## DESCRIPTION

M81969/14-01	22D GA INS/RMV
M81969/14-02	20 GA INS/RMV
M22520/2-01	CRIMPER 22D GA
M22520/2-07	TURRET 22D GA SKT
M22520/2-09	TURRET 22D GA PIN
M22520/1-01	CRIMPER 20 GA
M22520/1-02	TURRET 20 GA

## STRAIGHT BACKSHELLS

## SHELL SIZE

M85048/38-9*	A
M85049/38-11*	B
M85049/38-13*	C
M85049/38-15*	D
M85049/38-17*	E
M85049/38-19*	F
M85049/38-21*	G
M85049/38-23*	H
M85049/38-25*	J
*SEE FINISH TABLE	

## FINISH TABLE M85049/38

## FINISH

A	BLACK ANODIZE
N	ELECTROLESS NICKEL
W	OLIVE DRAB



# MIL-C-38999 SERIES 4 ORDERING GUIDE

D 3 8 9 9 9 / 4 2 F J 3 5 P N

## BASIC PART NUMBER

D38999 - SERIES 4

## SHELL STYLE

/40 -  
/41 -  
/42 -  
/43 -  
/44 -  
/45 -  
/46 -  
/47 -  
/48 -  
/49 -

## DESCRIPTION

WALL MOUNT RECEPTACLE  
HERMETIC BOX MOUNT RECEPTACLE  
BOX MOUNT RECEPTACLE  
HERMETIC JAM NUT RECEPTACLE  
JAM NUT RECEPTACLE  
HERMETIC SOLDER MOUNT RECEPTACLE  
EMI STRAIGHT PLUG  
STRAIGHT PLUG  
HERMETIC WELD MOUNT RECEPTACLE  
IN-LINE RECEPTACLE

## CLASS

C, F, G, J, K, M, S, W  
H, N, Y  
C, F, G, J, M, W  
H, N, Y  
C, F, G, J, K, M, S, W  
H, N, Y  
F, G, J, K, M, S, W  
C, G, J, M, W  
H, N, Y  
C, G, J, M, W

## CLASS DESCRIPTION

C\*  
F  
G  
H  
J  
K  
M  
N  
S  
W  
Y

ENVIRONMENTAL  
ENVIRONMENTAL  
ENVIRONMENTAL, SPACE GRADE  
HERMETIC, SPACE GRADE  
ENVIRONMENTAL  
ENVIRONMENTAL, FIREWALL  
ENVIRONMENTAL  
HERMETIC  
ENVIRONMENTAL  
ENVIRONMENTAL  
HERMETIC

## MATERIAL

ALUMINUM  
ALUMINUM  
ALUMINUM  
STAINLESS STEEL  
COMPOSITE  
STAINLESS STEEL  
COMPOSITE  
STAINLESS STEEL  
COMPOSITE  
STAINLESS STEEL  
STAINLESS STEEL  
ALUMINUM  
STAINLESS STEEL

## FINISH

NON-CONDUCTIVE ANODIZE  
ELECTROLESS NICKEL  
ELECTROLESS NICKEL  
ELECTROLESS NICKEL  
CADMIUM OLIVE DRAB, 500 HR. SALT SPRAY  
PASSIVATED  
ELECTROLESS NICKEL  
ELECTRODEPOSITED NICKEL  
ELECTRODEPOSITED NICKEL  
CADMIUM OLIVE DRAB, 500 HR. SALT SPRAY  
ELECTROLESS NICKEL

## TEMP.

200°C  
200°C  
200°C  
200°C  
175°C  
200°C  
200°C  
200°C  
200°C  
175°C  
200°C

## SHELL SIZE

A	B	C	D	E	F	G	H	J
9	11	13	15	17	19	21	23	25

## INSERT ARRANGEMENT

SEE CHART

## CONTACT STYLE

A - CONNECTOR LESS PIN CONTACTS  
B - CONNECTOR LESS SOCKET CONTACTS  
H - PIN CONTACTS, 1500 CYCLE  
J - SOCKET CONTACTS, 1500 CYCLE  
P - PIN CONTACTS (HERMETICS WITH SOLDER CUPS)  
S - SOCKET CONTACTS (HERMETICS WITH SOLDER CUPS)  
X - PIN WITH EYELET (HERMETICS ONLY)  
Z - SOCKET WITH EYELET (HERMETICS ONLY)

## ALTERNATE POSITION (POLARIZATION)

N - (NORMAL) A, B, C, D, K

# MIL-C-38999 SERIES 4 ORDERING GUIDE CONTINUED

## AVAILABLE SOURCES

MIL SPEC	CINCH	DEUTSCH	G & H TECHNOLOGY
/40C*	CN00C*	-	BL00C*
/40F*	CN00F*	DIV40E*	BL00F*
/40K*	-	-	BL00K*
/40W*	CN00W*	DIV40E*023	BL00W*
/42C*	CN02C*	-	BL02C*
/42F*	CN02F*	DIV43E*	BL02F*
/42W*	CN02W*	DIV43E*023	BL02W*
/44C*	CN07C*	-	BL07C*
/44F*	CN07F*	DIV44E*	BL07F*
/44K*	-	-	BL07K*
/44W*	CN07W*	DIV44E*023	BL07W*
/46F*	CNG6F*	DIV46E*	BLG6F*
/44F*	CN07F*	DIV44E*	BL07F*
/44K*	-	-	BL07K*
/44W*	CN07W*	DIV44E*023	BL07W*
/46F*	CNG6F*	DIV46E*	BLG6F*
/46K*	-	-	BLG6K*
/46W*	CNG6W*	DIV46E*023	BLG6W*
/47C*	CN06C*	-	BL06C*
/47F*	-	DIV46E*	-
/47W*	CN06W*	DIV46E*023	BL06W*
/49C*	CN03C*	-	BL03C*
/49F*	CN03F*	DIV48E*	BL03F*
/49W*	CN03W*	DIV48E*023	BL03W*

## HERMETIC SEAL CONNECTOR - AVAILABLE SOURCES

MIL SPEC	CINCH	DEUTSCH	G & H TECHNOLOGY
/41N*	CNH2N*	-	BLH2N*
/41Y*	CNH2Y*	-	BLH2Y*
/43N*	CNH7N*	DIV44H*	BLH7N*
/43Y*	CNH7Y*	DIV44H*854	BLH7Y*
/45N*	CNH1N*	DIV41H*	BLH1N*
/45Y*	CNH1Y*	-	BLH1Y*
/48N*	CNH4N*	-	BLH4N*
/48Y*	CNH4Y*	-	BLH4Y*

# MIL-C-38999 SERIES 3 & 4 INSERT CHART

## INSERT AND CONTACT INFORMATION

SHELL SIZE & INSERT NO.	CONTACTS			CONTACT PART NUMBER			
				500 CYCLE CONTACTS		1500 CYCLE CONTACTS	
	TOTAL	QTY	SIZE	PIN (STYLE P)	SOCKET (STYLE S)	PIN (STYLE H)	SOCKET (STYLE J)
A6	6	6	22M	M39029/58-361	M39029/56-349	-	-
A35	6	6	22D	M39029/58-360	M39029/56-348	M39029/107-620	M39029/106-614
A44	4	4	22	M39029/58-362	M39029/56-350	-	-
A98	3	3	20	M39029/58-363	M39029/56-351	M39029/107-621	M39029/106-615
B2	2	2	16	M39029/58-364	M39029/56-352	M39029/107-622	M39029/106-616
B4	4	4	20	M39029/58-363	M39029/56-351	M39029/107-621	M39029/106-615
B5	5	5	20	M39029/58-363	M39029/56-351	M39029/107-621	M39029/106-615
B13	13	13	22M	M39029/58-361	M39029/56-349	-	-
B35	13	13	22D	M39029/58-360	M39029/56-348	M39029/107-620	M39029/106-614
B98	6	6	20	M39029/58-363	M39029/56-351	M39029/107-621	M39029/106-615
B99	7	7	20	M39029/58-363	M39029/56-351	M39029/107-621	M39029/106-615
C4	4	4	16	M39029/58-364	M39029/56-352	M39029/107-622	M39029/106-616
C8	8	8	20	M39029/58-363	M39029/56-351	M39029/107-621	M39029/106-615
C22	22	22	22M	M39029/58-361	M39029/56-349	-	-
C35	22	22	22D	M39029/58-360	M39029/56-348	M39029/107-620	M39029/106-614
C98	10	10	20	M39029/58-363	M39029/56-351	M39029/107-621	M39029/106-615
D5	5	5	16	M39029/58-364	M39029/56-352	M39029/107-622	M39029/106-616
D15	15	14	20	M39029/58-363	M39029/56-351	M39029/107-621	M39029/106-615
		1	16	M39029/58-364	M39029/56-352	M39029/107-622	M39029/106-616
D18	18	18	20	M39029/58-363	M39029/56-351	M39029/107-621	M39029/106-615
D19	19	19	20	M39029/58-363	M39029/56-351	M39029/107-621	M39029/106-615
D35	37	37	22D	M39029/58-360	M39029/56-348	M39029/107-620	M39029/106-614
D37	37	37	22M	M39029/58-361	M39029/56-349	-	-
D97	12	8	20	M39029/58-363	M39029/56-351	M39029/107-621	M39029/106-615
		4	16	M39029/58-364	M39029/56-352	M39029/107-622	M39029/106-616
E2	39	38	22D	M39029/58-360	M39029/56-348	-	-
		1	8TW*	M39029/90-529	M39029/91-530	-	-
E6	6	6	12	M39029/58-365	M39029/56-353	M39029/107-623	M39029/106-617
E8	6	8	16	M39029/58-364	M39029/56-352	M39029/107-622	M39029/106-616
E26	26	26	20	M39029/58-363	M39029/56-351	M39029/107-621	M39029/106-615
E35	55	55	22D	M39029/58-360	M39029/56-348	M39029/107-620	M39029/106-614
E55	55	55	22M	M39029/58-361	M39029/56-349	-	-
E99	23	21	20	M39029/58-363	M39029/56-351	M39029/107-621	M39029/106-615
		2	16	M39029/58-364	M39029/56-352	M39029/107-622	M39029/106-616
F11	11	11	16	M39029/58-364	M39029/56-352	M39029/107-622	M39029/106-616
F18	18	14	22D	M39029/58-360	M39029/56-348	-	-
		4	8TW*	M39029/90-529	M39029/91-530	-	-
F28	28	26	20	M39029/58-363	M39029/56-351	M39029/107-621	M39029/106-615
		2	16	M39029/58-364	M39029/56-352	M39029/107-622	M39029/106-616
F30	30	29	20	M39029/58-363	M39029/56-351	M39029/107-621	M39029/106-615
		1	16	M39029/58-364	M39029/56-352	M39029/107-622	M39029/106-616
F32	32	32	20	M39029/58-363	M39029/56-351	M39029/107-621	M39029/106-615
F35	66	66	22D	M39029/58-360	M39029/56-348	M39029/107-620	M39029/106-614
F45	67	67	22D	M39029/58-360	M39029/56-348	M39029/107-620	M39029/106-614
F66	66	66	22M	M39029/58-361	M39029/56-349	-	-
F67	67	67	22M	M39029/58-361	M39029/56-349	-	-
G1	79	79	22M	M39029/58-361	M39029/56-349	-	-
G11	11	11	12	M39029/58-365	M39029/56-353	M39029/107-623	M39029/106-617

\*TW = Twinax

CONTINUED ON NEXT PAGE

# MIL-C-38999 SERIES 3 & 4

## INSERT CHART CONTINUED

### INSERT AND CONTACT INFORMATION

SHELL SIZE & INSERT NO.	CONTACTS			CONTACT PART NUMBER			
				500 CYCLE CONTACTS		1500 CYCLE CONTACTS	
	TOTAL	QTY	SIZE	PIN (STYLE P)	SOCKET (STYLE S)	PIN (STYLE H)	SOCKET (STYLE J)
G16	16	16	16	M39029/58-364	M39029/56-352	M39029/107-622	M39029/106-616
G24	24	24	20	M39029/58-363	M39029/56-351	M39029/107-621	M39029/106-615
G25	25	25	20	M39029/58-363	M39029/56-351	M39029/107-621	M39029/106-615
G27	27	27	20	M39029/58-363	M39029/56-351	M39029/107-621	M39029/106-615
G35	79	79	22D	M39029/58-360	M39029/56-348	M39029/107-620	M39029/106-614
G39	39	37	20	M39029/58-363	M39029/56-351	M39029/107-621	M39029/106-615
		2	16	M39029/58-364	M39029/56-352	M39029/107-622	M39029/106-616
G41	41	41	20	M39029/58-363	M39029/56-351	M39029/107-621	M39029/106-615
G75	4	4	8TW*	M39029/90-529	M39029/91-530	-	-
H1	100	100	22M	M39029/58-361	M39029/56-349	-	-
H2	85	85	22	M39029/58-362	M39029/56-350	-	-
H21	21	21	16	M39029/58-364	M39029/56-352	M39029/107-622	M39029/106-616
H32	32	32	20	M39029/58-363	M39029/56-351	M39029/107-621	M39029/106-615
H34	34	34	20	M39029/58-363	M39029/56-351	M39029/107-621	M39029/106-615
H35	100	100	22D	M39029/58-360	M39029/56-348	M39029/107-620	M39029/106-614
H36	36	36	20	M39029/58-363	M39029/56-351	M39029/107-621	M39029/106-615
H53	53	53	20	M39029/58-363	M39029/56-351	M39029/107-621	M39029/106-615
H55	55	55	20	M39029/58-363	M39029/56-351	M39029/107-621	M39029/106-615
H97	16	16	16	M39029/58-364	M39029/56-352	M39029/107-622	M39029/106-616
H99	11	11	16	M39029/58-364	M39029/56-352	M39029/107-622	M39029/106-616
J1	128	128	22M	M39029/58-361	M39029/56-349	-	-
J2	100	100	22	M39029/58-362	M39029/56-350	-	-
J4	56	48	20	M39029/58-363	M39029/56-351	M39029/107-621	M39029/106-615
		8	16	M39029/58-364	M39029/56-352	M39029/107-622	M39029/106-616
J7	99	97	22D	M39029/58-360	M39029/56-348	-	-
		2	8TW*	M39029/90-529	M39029/91-530	-	-
J8	8	8	8TW*	M39029/90-529	M39029/91-530	-	-
J11	11	2	20	M39029/58-363	M39029/56-351	M39029/107-621	M39029/106-615
		9	10	M39029/58-528	M39029/56-527	M39029/107-624	M39029/106-618
J19	19	19	12	M39029/58-365	M39029/56-353	M39029/107-623	M39029/106-617
		10	20	M39029/58-363	M39029/56-351	-	-
		13	16	M39029/58-364	M39029/56-352	-	-
J20	30	2	12S*	M39029/28-211	M39029/75-416	-	-
		2	12CX*	M39029/102-558	M39029/103-559	-	-
		3	8TW*	M39029/90-529	M39029/91-530	-	-
J24	24	12	16	M39029/58-364	M39029/56-352	M39029/107-622	M39029/106-616
		12	12	M39029/58-365	M39029/56-353	M39029/107-623	M39029/106-617
J29	29	29	16	M39029/58-364	M39029/56-352	M39029/107-622	M39029/106-616
J35	128	128	22D	M39029/58-360	M39029/56-348	M39029/107-620	M39029/106-614
J43	43	23	20	M39029/58-363	M39029/56-351	M39029/107-621	M39029/106-615
		20	16	M39029/58-364	M39029/56-352	M39029/107-622	M39029/106-616
		40	20	M39029/58-363	M39029/56-351	-	-
J46	46	4	16	M39029/58-364	M39029/56-352	-	-
		2	8C	M39029/60-367	M39029/59-366	-	-
J61	61	61	20	M39029/58-363	M39029/56-351	M39029/107-621	M39029/106-615
		40	20	M39029/58-363	M39029/56-351	-	-
J90	46	4	16	M39029/58-364	M39029/56-352	-	-
		2	8TW*	M39029/90-529	M39029/91-530	-	-

\*CX = COAXIAL S = SHEILDED TW = Twinax

# MIL-C-38999 SERIES 3 & 4 INSERT CONFIGURATIONS BY SHELL SIZE

## ALL INSERTS PER MIL-STD-1560

SHELL SIZE - INSERT CONFIGURATION				SERVICE RATING	TOTAL CONTACTS	CONTACT SIZE *							
SERIES I	SERIES II	SERIES III	SERIES IV			22D	22M	22	20	16	12	10	8
9-1	-	A1	-	M	1	-	-	-	-	-	-	-	1T
9-3	-	-	-	M	3	-	-	-	3	-	-	-	-
(9-6)	(8-6)	-	-	M	6	-	6	-	-	-	-	-	-
9-35	8-35	A35	-	M	6	6	-	-	-	-	-	-	-
(9-44)	(8-44)	-	-	M	4	-	-	4	-	-	-	-	-
9-98	8-98	A98	-	I	3	-	-	-	3	-	-	-	-
11-2	-	B2	B2	I	2	-	-	-	-	2C	-	-	-
11-4	-	B4	B4	I	4	-	-	-	4	-	-	-	-
11-5	10-5	B5	B5	I	5	-	-	-	5	-	-	-	-
(11-13)	(10-13)	(B13)	(B13)	M	13	-	13	-	-	-	-	-	-
11-35	10-35	B35	B35	M	13	13	-	-	-	-	-	-	-
11-98	10-98	B98	B98	I	6	-	-	-	6	-	-	-	-
11-99	10-99	B99	B99	I	7	-	-	-	7	-	-	-	-
-	12-3	-	-	II	3	-	-	-	-	3C	-	-	-
13-4	12-4	C4	C4	I	4	-	-	-	-	4C	-	-	-
13-8	12-8	C8	C8	I	8	-	-	-	8	-	-	-	-
(13-22)	(12-22)	(C22)	(C22)	M	22	-	22	-	-	-	-	-	-
13-35	12-35	C35	C35	M	22	22	-	-	-	-	-	-	-
13-98	12-98	C98	C98	I	10	-	-	-	10	-	-	-	-
15-5	14-5	D5	D5	II	5	-	-	-	-	5C	-	-	-
15-15	14-15	D15	D15	I	15	-	-	-	14	1C	-	-	-
15-18	14-18	D18	D18	I	18	-	-	-	18	-	-	-	-
15-19	14-19	D19	D19	I	19	-	-	-	19	-	-	-	-
15-35	14-35	D35	D35	M	37	37	-	-	-	-	-	-	-
(15-37)	(14-37)	-	-	M	37	-	37	-	-	-	-	-	-
15-97	14-97	D97	D97	I	12	-	-	-	8	4C	-	-	-
17-2	-	E2	E2	M	39	38	-	-	-	-	-	-	1T
17-6	16-6	E6	E6	I	6	-	-	-	-	-	6	-	-
-	16-7	-	-	II	6	-	-	-	-	-	6S	-	-
17-8	16-8	E8	E8	II	8	-	-	-	-	8C	-	-	-
17-26	16-26	E26	E26	I	26	-	-	-	26	-	-	-	-
17-35	16-35	E35	E35	M	55	55	-	-	-	-	-	-	-
-	(16-42)	-	-	M	42	-	-	42	-	-	-	-	-
(17-55)	(16-55)	(E55)	(E55)	M	55	-	55	-	-	-	-	-	-
17-99	16-99	E99	E99	I	23	-	-	-	21	2C	-	-	-
19-11	18-11	F11	F11	II	11	-	-	-	-	11C	-	-	-
19-18	-	F18	F18	M	18	14	-	-	-	-	-	-	4T
19-28	18-28	F28	F28	I	28	-	-	-	26	2C	-	-	-
19-30	18-30	F30	F30	I	30	-	-	-	29	1C	-	-	-
19-32	18-32	F32	F32	I	32	-	-	-	32	-	-	-	-

Parentheses ( ) indicate inactive for new design.  
 \* Letters following contact sizes indicate as follows:  
 C - Available as coax or standard contacts.  
 S - Size 12A shielded contacts.  
 T - Twinax contacts.

### CONTACT RATINGS

Contact Size	TEST CURRENT		MAXIMUM MILLIVOLT DROP		
	Standard	Hermetic	Crimp	Solder	
				Standard	Hermetic
22M	3	2	30	20	60
22D	5	-	40	-	-
22	5	3	40	20	85
20	7.5	5	35	20	60
16	13	10	25	20	85
12	23	17	25	-	85

### SERVICE RATINGS\*

Service Rating	SUGGESTED OPERATING VOLTAGE (Sea level)		TEST VOLTAGE			
	AC (rms)	DC	Sea Level	50,000 Ft.	70,000 Ft.	110,000 Ft.
M	400	550	1800 VRMS	600 VRMS	400 VRMS	200 VRMS
I	600	850	2300 VRMS	800 VRMS	500 VRMS	200 VRMS
II	900	1250				

\*Since the design engineer knows what transients, peak voltages, switching surges, etc. can be expected in a particular circuit. The establishment of electrical safety factors is left entirely in their hands.

# MIL-C-38999 SERIES 3 & 4

## INSERT CONFIGURATIONS

### BY SHELL SIZE CONTINUED

ALL INSERTS PER MIL-STD-1560

SHELL SIZE - INSERT CONFIGURATION				SERVICE RATING	TOTAL CONTACTS	CONTACT SIZE *							
SERIES I	SERIES II	SERIES III	SERIES IV			22D	22M	22	20	16	12	10	8
19-35	18-35	F35	F35	M	66	66	-	-	-	-	-	-	-
19-45	18-45	F45	F45	M	67	67	-	-	-	-	-	-	-
(19-53)	(18-53)	-	-	M	53	-	-	53	-	-	-	-	-
(19-66)	(18-66)	(F66)	(F66)	M	66	-	66	-	-	-	-	-	-
(19-67)	(18-67)	-	-	M	67	-	67	-	-	-	-	-	-
-	18-96	-	-	I	9	-	-	-	-	-	9C	-	-
(21-1)	(20-1)	(G1)	(G1)	M	79	-	79	-	-	-	-	-	-
-	(20-2)	-	-	M	65	-	-	65	-	-	-	-	-
21-11	-	G11	G11	I	11	-	-	-	-	-	11C	-	-
21-16	20-16	G16	G16	II	16	-	-	-	-	16C	-	-	-
21-24	20-24	G24	G24	I	24	-	-	-	24	-	-	-	-
21-25	20-25	G25	G25	I	25	-	-	-	25	-	-	-	-
21-27	20-27	G27	G27	I	27	-	-	-	27	-	-	-	-
21-35	20-35	G35	G35	M	79	79	-	-	-	-	-	-	-
21-39	20-39	G39	G39	I	39	-	-	-	37	2C	-	-	-
21-41	20-41	G41	G41	I	41	-	-	-	41	-	-	-	-
21-75	20-75	G75	G75	M	4	-	-	-	-	-	-	-	4T
(23-1)	(22-1)	(H1)	(H1)	M	100	-	100	-	-	-	-	-	-
(23-2)	(22-2)	-	-	M	85	-	-	85	-	-	-	-	-
23-21	22-21	H21	H21	II	21	-	-	-	-	21C	-	-	-
23-32	22-32	H32	H32	I	32	-	-	-	32	-	-	-	-
23-34	22-34	H34	H34	I	34	-	-	-	34	-	-	-	-
23-35	22-35	H35	H35	M	100	100	-	-	-	-	-	-	-
23-36	22-36	H36	H36	I	36	-	-	-	36	-	-	-	-
23-53	22-53	H53	H53	I	53	-	-	-	53	-	-	-	-
23-55	22-55	H55	H55	I	55	-	-	-	55	-	-	-	-
23-97	22-97	H97	H97	I	16	-	-	-	-	16	-	-	-
23-99	22-99	H99	H99	II	11	-	-	-	-	11	-	-	-
(25-1)	(24-1)	(J1)	(J1)	M	128	-	128	-	-	-	-	-	-
(25-2)	(24-2)	(J2)	(J2)	M	100	-	-	100	-	-	-	-	-
25-4	24-4	J4	J4	I	56	-	-	-	48	8C	-	-	-
25-7	-	J7	J7	M	99	97	-	-	-	-	-	-	2T
25-8	-	J8	J8	M	8	-	-	-	-	-	-	-	8T
25-11	-	J11	J11	I	11	-	-	-	2	-	-	9	-
25-19	24-19	J19	J19	I	19	-	-	-	-	-	19C	-	-
25-20	-	J20	J20	I	30	-	-	-	10	13F	4C	-	3T
25-24	24-24	J24	J24	I	24	-	-	-	-	12C	12C	-	-
25-29	24-29	J29	J29	I	29	-	-	-	-	29C	-	-	-
25-35	24-35	J35	J35	M	128	128	-	-	-	-	-	-	-
25-43	-	J43	J43	I	43	-	-	-	23	20C	-	-	-
25-46	-	J46	J46	I	46	-	-	-	40	4	-	-	2C
25-61	24-61	J61	J61	I	61	-	-	-	61	-	-	-	-
25-90	-	J90	J90	I	46	-	-	-	40	4	-	-	2T

Parentheses ( ) indicate inactive for new design.  
 \* Letters following contact sizes indicate as follows:  
 C - Available as coax or standard contacts.  
 S - Size 12A shielded contacts.  
 T - Twinax contacts.

#### CONTACT RATINGS

Contact Size	TEST CURRENT		MAXIMUM MILLIVOLT DROP			
	Standard	Hermetic	Crimp	Solder		
				Standard	Hermetic	
22M	3	2	30	20	60	
22D	5	-	40	-	-	
22	5	3	40	20	85	
20	7.5	5	35	20	60	
16	13	10	25	20	85	
12	23	17	25	-	85	

#### SERVICE RATINGS\*

Service Rating	SUGGESTED OPERATING VOLTAGE (Sea level)		TEST VOLTAGE			
	AC (rms)	DC	Sea Level	50,000 Ft.	70,000 Ft.	110,000 Ft.
M	400	550	1300 VRMS	550 VRMS	350 VRMS	200 VRMS
I	600	850	1800 VRMS	600 VRMS	400 VRMS	200 VRMS
II	900	1250	2300 VRMS	800 VRMS	500 VRMS	200 VRMS

\*Since the design engineer knows what transients, peak voltages, switching surges, etc. can be expected in a particular circuit. The establishment of electrical safety factors is left entirely in their hands.

# MIL-C-5015 ORDERING GUIDE

M S 3 1 0 6 F 1 6 S - 1 P W

**BASIC PART NUMBER**

- MS3100 - WALL MOUNT RECEPTACLE
- MS3101 - IN-LINE RECEPTACLE
- MS3102 - BOX MOUNT RECEPTACLE
- MS3106 - STRAIGHT PLUG
- MS3108 - RIGHT ANGLE PLUG

**CLASS**

- A - NON-ENVIRONMENTAL (CLAMP ORDERED SEPARATELY)
- E - ENVIRONMENTAL WITH CLAMP
- F - ENVIRONMENTAL WITH CLAMP, O'RING
- R - ENVIRONMENTAL WITH PRESSURE TYPE CLAMP

**SHELL SIZE**

- 10SL - 36

**INSERT ARRANGEMENT**

SEE CHART

**CONTACT STYLE**

- P - PIN
- S - SOCKET

**ALTERATION POSITION**

- BLANK - NORMAL
- W
- X
- Y
- Z

# MIL-C-5015 INSERT CHART

INSERT ARRANGEMENT	TOTAL CONTACTS	16 GA	12 GA	8 GA	4 GA
10SL - 3	3	3			
10SL - 4	2	2			
12S - 3	2	2			
14S - 1	3	3			
14S - 2	4	4			
14S - 5	5	5			
14S - 6	6	6			
14S - 7	3	3			
14S - 9	2	2			
16 - 9	4	2	2		
16 - 10	3		3		
16 - 11	2		2		
16S - 1	7	7			
16S - 4	2	2			
16S - 5	3	3			
16S - 8	5	5			
18 - 1	10	10			
18 - 3	2		2		
18 - 4	4	4			
18 - 5	3	1	2		
18 - 8	8	7	1		
18 - 9	7	5	2		
18 - 10	4		4		
18 - 11	5		5		
18 - 12	6	6			
18 - 19	10	10			
20 - 4	4		4		
20 - 7	8	8			
20 - 15	7		7		
20 - 16	9	7	2		
20 - 17	6	1	5		
20 - 18	9	6	3		
20 - 22	6	3	3		
20 - 23	2			2	
20 - 27	14	14			
20 - 29	17	17			
20 - 33	11	11			
22 - 2	3			3	
22 - 4	4		2	2	
22 - 5	6	4	2		
22 - 9	3		3		
22 - 10	4	4			
22 - 14	19	19			
22 - 18	8	8			
22 - 19	14	14			
22 - 22	4				
22 - 23	8			8	



# MIL-C-5015 INSERT CHART CONTINUED

INSERT ARRANGEMENT	TOTAL CONTACTS	16 GA	12 GA	8 GA	4 GA
24 - 2	7		7		
24 - 5	16	16			
24 - 6	8		8		
24 - 10	7			7	
24 - 12	5		3		2
24 - 20	11	9	2		
24 - 27	7	7			
24 - 28	24	24			
28 - 1	9		6	3	
28 - 2	14	12	2		
28 - 9	12	6	6		
28 - 11	22	18	4		
28 - 12	26	26			
28 - 15	35	35			
28 - 16	20	20			
28 - 17	15	15	4		
28 - 20	14	4	10		
28 - 21	37	37			
32 - 7	35	28	7		
32 - 8	30	24	6		
36 - 7	47	40	7		
36 - 8	47	46	1		
36 - 10	48	48			

CONTACT SIZE	WIRE SIZE ACCOMMODATION	MAX. AMP RATING
16 GA	16-22 GA	22
12 GA	12-14 GA	41
8 GA	8-10 GA	73
4 GA	4-6 GA	135

# MIL-C-5015 ACCESSORIES

## STRAIGHT

## SHELL SIZE

MS3057-4A	10SL, 12,12S
MS3057-6A	14, 14S
MS3057-8A	16, 16S
MS3057-10A	18
MS3057-12A	20, 22
MS3057-16A	24, 28
MS3057-20A	32
MS3057-24A	36

## BUSHINGS

## SHELL SIZE

MS3420-4	10SL, 12,12S
MS3420-6	14, 14S
MS3420-8	16, 16S
MS3420-10	18
MS3420-12	20, 22
MS3420-16	24, 28
MS3420-20	32
MS3420-24	36

## BUSHINGS

## SHELL SIZE

MS25042-10D	10SL
MS25042-12D	12, 12S
MS25042-14D	14, 14S
MS25042-16D	16, 16S
MS25042-18D	18
MS25042-20D	20
MS25042-22D	22
MS25042-24D	24
MS25042-28D	28
MS25042-32D	32
MS25042-36D	36

# MIL-C-5015 ACCESSORIES

## RECEPTACLE CAP & CHAINS

## SHELL SIZE

MS25043-10D	10SL
MS25043-12D	12, 12S
MS25043-14D	14, 14S
MS25043-16D	16, 16S
MS25043-18D	18
MS25043-20D	20
MS25043-22D	22
MS25043-24D	24
MS25043-28D	28
MS25043-32D	32
MS25043-36D	36

# MIL-C-5015G ORDERING GUIDE

M S 3 4 5 6 L | 1 0 S L - 3 S

## BASIC PART NUMBER ...

MS3450 - WALL MOUNT RECEPTACLE  
MS3451 - IN-LINE RECEPTACLE  
MS3452 - BOX MOUNT RECEPTACLE  
MS3456 - STRAIGHT PLUG  
MS3459 - STRAIGHT PLUG, SELF-LOCKING

## CLASS

K - FIREWALL, FLUID RESISTANT  
L - ELECTROLESS NICKEL FINISH  
W - OLIVE DRAB FINISH

## SHELL MATERIAL

BLANK - ALUMINUM  
S - STAINLESS STEEL  
T - STEEL FERROUS ALLOY (K ONLY)

## SHELL SIZE

10SL - 40

## INSERT ARRANGEMENT

SEE CHART

## CONTACT STYLE

P - PIN  
S - SOCKET

## POLARIZATION

BLANK - NORMAL  
W  
X  
Y  
Z

# MIL-C-5015G INSERT CHART

INSERT ARRANGEMENT	TOTAL CONTACTS	16 GA	12 GA	8 GA	4 GA	0 GA
10SL - 3	3	3				
10SL - 4	2	2				
12S - 3	2	2				
14S - 2	4	4				
14S - 5	5	5				
14S - 7	3	3				
14S - 9	2	2				
16S - 1	7	7				
16S - 4	2	2				
16S - 8	5	5				
16 - 7	3	2		1		
16 - 9	4	2	2			
16 - 10	3		3			
16 - 11	2		2			
18 - 1	10	10				
18 - 4	4	4				
18 - 8	8	7	1			
18 - 9	7	5	2			
18 - 10	4		4			
18 - 11	5		5			
18 - 12	6	6				
18 - 22	3	3				
20 - 2	1					1
20 - 4	4		4			
20 - 7	8	8				
20 - 14	5		3	2		
20 - 16	9	7	2			
20 - 18	9	6	3			
20 - 27	14	14				
20 - 29	17	17				
22 - 2	3			3		
22 - 5	6	4	2			
22 - 13	5	1	4			
22 - 14	19	19				
22 - 16	9	6	3			
22 - 18	8	8				
22 - 19	14	14				
22 - 22	4			4		
24 - 4	4	3				1
24 - 7	16	14	2			
24 - 10	7			7		
24 - 11	9		6	3		
24 - 20	11	9	2			
24 - 22	4			4		
24 - 28	24	24				

# MIL-C-5015G INSERT CHART

INSERT ARRANGEMENT	TOTAL CONTACTS	16 GA	12 GA	8 GA	4 GA	0 GA
28 - 2	14	12	2			
28 - 9	12	6	6			
28 - 11	22	18	4			
28 - 12	26	26				
28 - 15	35	35				
28 - 17	15	15				
28 - 18	12	12				
28 - 21	37	37				
32 - 6	19	16		3		
32 - 7	35	28	7			
32 - 9	14	12			2	
32 - 12	15	10	5			
32 - 13	23	18	5			
32 - 17	4				4	
36 - 3	6		3			3
36 - 5	4					4
36 - 6	6				4	2
36 - 7	47	40	7			
36 - 8	47	46	1			
36 - 10	48	48				
36 - 52	52	52				
40 - 1	30	24	6			

# MIL-C-5015G ACCESSORIES

## CONTACTS

## DESCRIPTION

M39029/29-212	16 GA PIN
M39029/30-217	16S GA SKT
M39029/30-218	16 GA SKT
M39029/29-213	12 GA PIN
M39029/30-219	12 GA SKT
M39029/29-214	8 GA PIN
M39029/30-220	8 GA SKT
M39029/29-215	4 GA PIN
M39029/30-221	4 GA SKT
M39029/29-216	0 GA PIN
M39029/30-222	0 GA SKT

## TOOLS

## DESCRIPTION

M81969/14-03	16 GA INS/RMV
M81969/14-04	12 GA INS/RMV
CET 8-2	8 GA INS/RMV
CET 4-8	4 GA INS/RMV
CET 0-1	0 GA INS/RMV
M22520/1-01	CRIMPER 16/12
M22520/1-02	TURRET 16/12
CBT 6008	CRIMPER 8/4/0

## STRAIGHT BACKSHELLS

## ALTERNATE

M85049/52-1-10*	MS3417-10*
M85049/52-1-12*	MS3417-12*
M85049/52-1-14*	MS3417-14*
M85049/52-1-16*	MS3417-16*
M85049/52-1-18*	MS3417-18*
M85049/52-1-20*	MS3417-20*
M85049/52-1-22*	MS3417-22*
M85049/52-1-24*	MS3417-24*
M85049/52-1-28*	MS3417-28*
M85049/52-1-32*	MS3417-32*
M85049/52-1-36*	MS3417-36*
M85049/52-1-40*	MS3417-40*

\*SEE FINISH TABLE

# MIL-C-5015G ACCESSORIES CONTINUED

## 90 DEGREE BACKSHELLS

## ALTERNATE

M85049/51-1-10*	MS3418-10*
M85049/51-1-12*	MS3418-12*
M85049/51-1-14*	MS3418-14*
M85049/51-1-16*	MS3418-16*
M85049/51-1-18*	MS3418-18*
M85049/51-1-20*	MS3418-20*
M85049/51-1-22*	MS3418-22*
M85049/51-1-24*	MS3418-24*
M85049/51-1-28*	MS3418-28*
M85049/51-1-32*	MS3418-32*
M85049/51-1-36*	MS3418-36*
M85049/51-1-40*	MS3418-40*

## GROMET NUTS

## DESCRIPTION

M85049/31-1-10*	MS3416-10E*
M85049/31-1-12*	MS3416-12E*
M85049/31-1-14*	MS3416-14E*
M85049/31-1-16*	MS3416-16E*
M85049/31-1-18*	MS3416-18E*
M85049/31-1-20*	MS3416-20E*
M85049/31-1-22*	MS3416-22E*
M85049/31-1-24*	MS3416-24E*
M85049/31-1-28*	MS3416-28E*
M85049/31-1-32*	MS3416-32E*
M85049/31-1-36*	MS3416-36E*
M85049/31-1-40*	MS3416-40E*

\*SEE FINISH TABLE

## FINISH TABLE

### M85049/31, 51, 52

### MS3416, 7, 8

### FINISH

W	A	O.D. 500HR SALT SPRAY
-	C	OLIVE DRAB
N	N	ELECTROLESS NICKEL
A	G	BLACK ANODIZE



# MIL-C-81511 Series 1 & 2 ORDERING GUIDE

M 8 1 5 1 1 / 0 6 E D 0 1 P 1

## BASIC PART NUMBER

M81511 - SERIES 1 & 2

## SHELL STYLE

(SERIES 2 STANDARD - 50% SCOOP PROOF)

/01 - WALL MOUNT RECEPTACLE

/03 - JAM-NUT RECEPTACLE

/05 - IN-LINE RECEPTACLE

/06 - STRAIGHT PLUG

(SERIES 1 LONG - 100% SCOOP PROOF)

/21 - WALL MOUNT RECEPTACLE

/23 - JAM-NUT RECEPTACLE

/25 - IN-LINE RECEPTACLE

/26 - STRAIGHT PLUG

## CLASS

E - GROMMET SEAL

## SHELL SIZE

A	B	D	E	F	G	H	J
8	10	14	16	18	20	22	24

## INSERT ARRANGEMENT

SEE CHART

## CONTACT STYLE

P - PIN

S - SOCKET

## POLARIZATION

1  
2  
3  
4  
5  
6

# MIL-C-81511 Series 1 & 2 INSERT CHART

INSERT ARRANGEMENT	TOTAL CONTACTS	23 GA	20 GA	16 GA	12 GA
A01 (8-04) .....	4	4			
B03 (10-03) ...	3			3	
B02 (10-05) ...	5		5		
D04 (14-04) ...	4				4
D03 (14-09) ...	9			9	
D02 (14-19) ..	19		19		
D01 (14-37) ..	37	37			
E04 (16-07) ..	7				7
E03 (16-14) ..	14			14	
E02 (16-27) ..	27		27		
E01 (16-55) ..	55	55			
F04 (18-09) ..	9				9
F03 (18-21) ..	21			21	
F02 (18-38) ..	38		38		
F01 (18-85) ..	85	85			
G04 (20-11) ..	11				11
G03 (20-24) ..	24			24	
G02 (20-45) ..	45		45		
G01 (20-92) ..	92	92			
H04 (22-14) ..	14				14
H03 (22-32) ..	32			32	
H02 (22-61) ..	61		61		
H01 (22-121) .	121	121			
J04 (24-19) ...	19				19
J03 (24-41) ...	41			41	
J02 (24-74) ...	74		74		
J01 (24-155) .	155	155			

# MIL-C-81511 Series 1 & 2 ACCESSORIES

## SERIES 1 CONTACTS

## DESCRIPTION

M39029/47-314	23 GA PIN
M39029/33-264	23 GA SKT
M39029/47-316	20 GA PIN
M39029/33-266	20 GA SKT
M39029/47-337	16 GA PIN
M39029/33-268	16 GA SKT
M39029/47-339	12 GA PIN
M39029/33-270	12 GA SKT

## SERIES 2 CONTACTS

## DESCRIPTION

M39029/47-314	23 GA PIN
M39029/46-304	23 GA PIN
M39029/47-316	20 GA PIN
M39029/46-306	20 GA PIN
M39029/47-337	16 GA PIN
M39029/46-308	16 GA PIN
M39029/47-339	12 GA PIN
M39029/46-310	12 GA PIN

## TOOLS

## DESCRIPTION

M81969/16-04	23 GA INS/RMV
M81969/16-01	20 GA INS/RMV
M81969/16-02	16 GA INS/RMV
M81969/16-03	12 GA INS/RMV
M22520/2-01	CRIMPER 23 GA
M22520/2-03	TURRET 23 GA
M22520/1-01	CRIMPER 20/16/12 GA
M22520/1-08	TURRET 20/16/12 GA

## TOOLS

## DESCRIPTION

M81511/13-08B1	A (8)
M81511/13-10B1	B (10)
M81511/13-14B1	D (14)
M81511/13-16B1	E (16)
M81511/13-18B1	F (18)
M81511/13-20B1	G (20)
M81511/13-22B1	H (22)
M81511/13-24B1	J (24)

# MIL-C-81511 Series 3 & 4 ORDERING GUIDE

M 8 1 5 1 1 / 4 6 F J 0 1 P 1

## BASIC PART NUMBER

M81511 - SERIES 3 & 4

## SHELL STYLE

(SERIES 3 LONG - 100% SCOOP PROOF)

/41 - WALL MOUNT RECEPTACLE

/45 - IN-LINE RECEPTACLE

/46 - STRAIGHT PLUG

/49 - JAM-NUT RECEPTACLE

(SERIES 4 STANDARD - 50% SCOOP PROOF)

/51 - WALL MOUNT RECEPTACLE

/53 - JAM-NUT RECEPTACLE

/55 - IN-LINE RECEPTACLE

/56 - STRAIGHT PLUG

## CLASS

F - GROMMET SEAL, NICKEL FINISH

W - GROMMET SEAL, OLIVE DRAB FINISH

## SHELL SIZE

A	B	D	E	F	G	H	J
8	10	14	16	18	20	22	24

## INSERT ARRANGEMENT

SEE CHART

## CONTACT STYLE

P - PIN

S - SOCKET

A - LESS PIN CONTACTS

B - LESS SOCKET CONTACTS

## POLARIZATION

1  
2  
3  
4  
5  
6

# MIL-C-81511 Series 3 & 4 INSERT CHART

INSERT ARRANGEMENT	TOTAL CONTACTS	23 GA	20 GA	16 GA	12 GA
A01 (8-04) .....	4	4			
B03 (10-03) ...	3			3	
B02 (10-05) ...	5		5		
D04 (14-04) ...	4				4
D03 (14-09) ...	9			9	
D02 (14-19) ...	19		19		
D01 (14-37) ...	37	37			
E04 (16-07) ...	7				7
E03 (16-14) ...	14			14	
E02 (16-27) ...	27		27		
E01 (16-55) ...	55	55			
F04 (18-09) ...	9				9
F03 (18-21) ...	21			21	
F02 (18-38) ...	38		38		
F01 (18-85) ...	85	85			
G04 (20-11) ..	11				11
G03 (20-24) ..	24			24	
G02 (20-45) ..	45		45		
G01 (20-92) ..	92	92			
H04 (22-14) ..	14				14
H03 (22-32) ..	32			32	
H02 (22-61) ..	61		61		
H01 (22-121) .	121	121			
J04 (24-19) ...	19				19
J03 (24-41) ...	41			41	
J02 (24-74) ...	74		74		
J01 (24-155) .	155	155			

# MIL-C-81511 Series 3 & 4 ACCESSORIES

## SERIES 3 CONTACTS

## DESCRIPTION

M39029/18-177	23 GA PIN
M39029/17-172	23 GA SKT
M39029/18-178	20 GA PIN
M39029/17-173	20 GA SKT
M39029/18-179	16 GA PIN
M39029/17-174	16 GA SKT
M39029/18-180	12 GA PIN
M39029/17-175	12 GA SKT

## SERIES 4 CONTACTS

## DESCRIPTION

M39029/18-177	23 GA PIN
M39029/16-167	23 GA PIN
M39029/18-178	20 GA PIN
M39029/16-168	20 GA PIN
M39029/18-179	16 GA PIN
M39029/16-169	16 GA PIN
M39029/18-180	12 GA PIN
M39029/16-170	12 GA PIN

## TOOLS

## DESCRIPTION

M81969/16-04	23 GA INS/RMV
M81969/16-01	20 GA INS/RMV
M81969/16-02	16 GA INS/RMV
M81969/16-03	12 GA INS/RMV
M22520/2-01	CRIMPER 23/16/12 GA
M22520/2-16	TURRET 23 GA/SERIES 3
M22520/2-13	TURRET 23 GA/SERIES 4
M22520/2-17	TURRET 20 GA/SERIES 3
M22520/2-14	TURRET 20 GA/SERIES 4
M22520/2-18	TURRET 16 GA/SERIES 3
M22520/2-15	TURRET 16 GA/SERIES 4
M22520/1-01	CRIMPER 12 GA
M22520/1-10	TURRET 12 GA/SERIES 3
M22520/1-09	TURRET 12 GA/SERIES 4

## TOOLS

## DESCRIPTION

M81511/13-08B1	A (8)
M81511/13-10B1	B (10)
M81511/13-14B1	D (14)
M81511/13-16B1	E (16)
M81511/13-18B1	F (18)
M81511/13-20B1	G (20)
M81511/13-22B1	H (22)
M81511/13-24B1	J (24)

# MIL-C-83723 SERIES 3 ORDERING GUIDE

M 8 3 7 2 3 / 7 5 R 2 0 4 1 N

## BASIC PART NUMBER

M83723 - SERIES 3

## SHELL/CONTACT STYLE

### (BAYONET - PIN)

/72 - WALL MOUNT RECEPTACLE

/74 - JAM-NUT RECEPTACLE

/76 - STRAIGHT PLUG

/78 - STRAIGHT PLUG, EMI GROUNDING

### (BAYONET - SOCKET)

/71 - WALL MOUNT RECEPTACLE

/73 - JAM-NUT RECEPTACLE

/75 - STRAIGHT PLUG

/77 - STRAIGHT PLUG, EMI GROUNDING

### (THREADED - PIN)

/83 - WALL MOUNT RECEPTACLE

/85 - JAM-NUT RECEPTACLE

/87 - STRAIGHT PLUG

/92 - STRAIGHT PLUG, EMI GROUNDING

/96 - STRAIGHT PLUG, SELF-LOCKING COUPLING

/98 - STRAIGHT PLUG, SELF-LOCKING COUPLING, EMI GROUNDING

### (THREADED - SOCKET)

/82 - WALL MOUNT RECEPTACLE

/84 - JAM-NUT RECEPTACLE

/86 - STRAIGHT PLUG

/91 - STRAIGHT PLUG, EMI GROUNDING

/95 - STRAIGHT PLUG, SELF-LOCKING COUPLING

/97 - STRAIGHT PLUG, SELF-LOCKING COUPLING, EMI GROUNDING

## SHELL FINISH

A - BLACK ANODIZE

G - PASSIVATED STAINLESS STEEL

R - NICKEL FINISH

W - OLIVE DRAB CADMIUM

## SHELL SIZE

8 - 24

## INSERT ARRANGEMENT

SEE CHART

## POLARIZATION

N - NORMAL

6

7

8

9

10

# MIL-C-83723 SERIES 2 & 3 INSERT CHART

INSERT ARRANGEMENT	TOTAL CONTACTS	20 GA	16 GA	12 GA
8-2	2	2		
8-3	3	3		
8-98	3	3		
10-2	2	2		
10-5	5	5		
10-6	6	6		
10-20	2		2	
12-3	3		3	
12-4	4		4	
12-12	12	12		
14-4	4			4
14-7	7	7		
14-12	12	9	3	
14-15	15	15		
16-10	10		10	
16-24	24	24		
18-8	8			8
18-14	14		14	
18-31	31	31		
20-16	16		16	
20-25	25	19		6
20-28	28	24		4
20-39	39	37	2	
20-41	41	41		
22-12	12			12
22-19	19		19	
22-23	23		23	
22-32	32	26		6
22-39	39	27	12	
22-55	55	55		
24-30	30		30	
24-43	43	23	20	
24-57	57	55		2
24-61	61	61		
28-41	41		41	
28-42	42		42	



# MIL-C-83723 SERIES 2 & 3 ACCESSORIES

## CONTACTS

## DESCRIPTION

M39029/4-110	20 GA PIN
M39029/5-115	20 GA SKT
M39029/4-111	16 GA PIN
M39029/5-116	16 GA SKT
M39029/4-113	12 GA PIN
M39029/5-118	12 GA SKT

## TOOLS

## DESCRIPTION

M81969/14-02	20 GA INS/RMV
M81969/14-03	16 GA INS/RMV
M81969/14-04	12 GA INS/RMV
M822520/1-01	CRIMPER
M822520/1-02	TURRET

## STRAIGHT BACKSHELLS

## ALTERNATE

M85049/52-1-8*	MS3417-8*
M85049/52-1-10*	MS3417-10*
M85049/52-1-12*	MS3417-12*
M85049/52-1-14*	MS3417-14*
M85049/52-1-16*	MS3417-16*
M85049/52-1-18*	MS3417-18*
M85049/52-1-20*	MS3417-20*
M85049/52-1-22*	MS3417-22*
M85049/52-1-24*	MS3417-24*
*SEE FINISH TABLE	

## 90 DEGREE BACKSHELLS

## ALTERNATE

M85049/51-1-8*	MS3418-8
M85049/51-1-10*	MS3418-10
M85049/51-1-12*	MS3418-12
M85049/51-1-14*	MS3418-14
M85049/51-1-16*	MS3418-16
M85049/51-1-18*	MS3418-18
M85049/51-1-20*	MS3418-20
M85049/51-1-22*	MS3418-22
M85049/51-1-24*	MS3418-24
*SEE FINISH TABLE	

# MIL-C-83723 SERIES 2 & 3 ACCESSORIES

## GROMMET NUTS

## ALTERNATE

M39029/31-08*	MS3416-8E*
M39029/31-10*	MS3416-10E*
M39029/31-12*	MS3416-12E*
M39029/31-14*	MS3416-14E*
M39029/31-16*	MS3416-16E*
M39029/31-18*	MS3416-18E*
M39029/31-20*	MS3416-20E*
M39029/31-22*	MS3416-22E*
M39029/31-24*	MS3416-24E*

## RECEPTACLE CAP & CHAINS

## SHELL SIZE

MS3181-08C	8
MS3181-10C	10
MS3181-12C	12
MS3181-14C	14
MS3181-16C	16
MS3181-18C	18
MS3181-20C	20
MS3181-22C	22
MS3181-24C	24

## RECEPTACLE CAP & CHAINS

## SHELL SIZE

MS3180-08C	8
MS3180-10C	10
MS3180-12C	12
MS3180-14C	14
MS3180-16C	16
MS3180-18C	18
MS3180-20C	20
MS3180-22C	22
MS3180-24C	24

## FINISH TABLE M85049/31,51,52

## MS3416,7,8

## FINISH

W	A	O.D. 500HR SALT SPRAY
-	C	OLIVE DRAB
N	N	ELECTROLESS NICKEL
A	G	BLACK ANODIZE

# DM-DEUTSCH ORDERING GUIDE

D M 9 7 0 0 - 7 S

## BASIC PART NUMBER

DM5600 - HERMETIC SOLDER MOUNT RECEPTACLE  
DM5606 - HERMETIC BOX MOUNT RECEPTACLE  
DM5601 - JAM NUT RECEPTACLE  
DM9606 - BOX MOUNT RECEPTACLE  
DM9700 - STRAIGHT PLUG  
DM9702 - STRAIGHT PLUG W/CLAMP

## SHELL SIZE

3 - 61

INSERT ARRANGEMENT  
SEE CHART

## CONTACT STYLE

P - PIN  
S - SOCKET

## POLARIZATION

BLANK - NORMAL  
W  
X  
Y  
B  
C

# DM-DEUTSCH INSERT CHART

INSERT ARRANGEMENT	TOTAL CONTACTS	20 GA	16 GA	12 GA	COAX
3	3	3			
7	7	7			
12	12	12			
12-6	6	6			
19	19	19			
194	4		4		
197	7		7		
1912	12	12			
192	11	9		2	
27	27	27			
27-2	14	14			
27-3	16	14	2		
27-5	19	19			
27-8	10	6	4		
27-11	12	12			
27-13	15	12		3	
2722	22	22			
2724	24	24			
37	37	37			
37-2	24	24			
37-3	12		12		
37-13	31	30		1	
3719	19	13		6	
61	61	61			
61-3	53	49	4		
61-5	51	49		2	
61-25	51	45	5	1	
61-14	37	37			
61-20	25	12	13		

# DM-DEUTSCH ORDERING GUIDE

D S 0 7 - 7 S - 0 5 9

## BASIC PART NUMBER

DS00 - WALL MOUNT RECEPTACLE  
DS04 - JAM NUT RECEPTACLE  
DS07 - STRAIGHT PLUG

## SHELL SIZE

3 - 61

## INSERT ARRANGEMENT

SEE CHART

## CONTACT STYLE

P - PIN  
S - SOCKET

## POLARIZATION

BLANK - NORMAL  
W  
X  
Y  
B  
C

## MODIFIER

059 - WITH CABLE CLAMP

# DS-DEUTSCH INSERT CHART

INSERT ARRANGEMENT	SHELL SIZE	TOTAL CONTACTS	20 GA	16 GA	12 GA
3 .....	3 .....	3 .....	3 .....		
7 .....	7 .....	7 .....	7 .....		
12 .....	12 .....	12 .....	12 .....		
19 .....	19 .....	19 .....	19 .....		
194 .....	19 .....	4 .....			4 .....
197 .....	19 .....	7 .....			12 .....
27 .....	27 .....	27 .....	27 .....		
27-2 .....	27 .....	14 .....		14 .....	
37 .....	37 .....	37 .....	37 .....		
61 .....	61 .....	61 .....	61 .....		

# DS-DEUTSCH ACCESSORIES

## CONTACTS

## DESCRIPTION

800-20/32-1	20 GA PIN
800-20/30-1	20 GA SKT
800-16/32-1	16 GA PIN
800-16/30-3	16 GA SKT
800-12/32-1	12 GA PIN
800-12/30-3	12 GA SKT

## TOOLS

## DESCRIPTION

M15513-20	20 GA INS
M15513-16	16 GA INS
M15513-12	12 GA INS
M15515-20	20 GA RMV
M15515-16	16 GA RMV
M15515-12	12 GA RMV
M22520/1-01	CRIMPER
TH18	TURRET

# RSM-DEUTSCH ORDERING GUIDE

R S M 0 7 | - 1 9 | - 3 3 | S W

## BASIC PART NUMBER

RSM00 - WALL MOUNT RECEPTACLE  
RSM04 - JAM NUT RECEPTACLE  
RSM07 - STRAIGHT PLUG

## SHELL SIZE

3 - 27

## INSERT ARRANGEMENT

SEE CHART

## CONTACT STYLE

P - PIN  
S - SOCKET

## POLARIZATION

W  
X  
Y

## MODIFIER



# RSM-DEUTSCH INSERT CHART

INSERT ARRANGEMENT	SHELL SIZE	TOTAL CONTACTS	22 GA	20 GA	16 GA
3-9	3	7	7		
3-12	3	2		2	
7-15	7	19	19		
12-14	12	37	37		
12-25	12	16	12		4
19-33	19	61	61		
19-38	19	33	26		7
19-40	19	22		22	
27-30	27	91	91		
27-34	21	32		32	

# KO & KM-CANNON ORDERING GUIDE

K O A 3 - 2 1 - 5 0 S N KM  
2\*

## SERIES PREFIX

KO - SOLDER  
KM - CRIMP (MIL-C-24236)

## SPECIAL SHELL

A - FOR 21-38 & 21-50 ONLY  
BLANK - ALL OTHERS

## SHELL STYLE

0 - WALL MOUNT RECEPTACLE  
1 - IN-LINE RECEPTACLE  
2 - BOX MOUNT RECEPTACLE  
3 - PLUG

## SHELL SIZE

16  
19  
21

## INSERT ARRANGEMENT

SEE CHART

## CONTACT STYLE

P - PIN  
S - SOCKET

## ALTERNATE POSITION

N - NORMAL  
V  
W  
X  
Y  
Z

\*KM AND KMA ONLY: MARK-2 DESIGN WITH MS3190 TYPE CONTACTS, CEMENTED GROMMET, THRU CROMMET, INSERTION AND EXTRACTION OF CONTACTS AND A THREADED SCREW ON ENDBELL.

# KO & KM-CANNON INSERT CHART

## INSERT ARRANGEMENT

## TOTAL CONTACTS 20 GA

16-10	10
19-20	20
21-30	30
21-38	38
21-50	50

## STRAIGHT BACKSHELLS

## SHELL SIZE

KO6-16-3/8	16
KO6-19-1/2	19
KO6-21-5/8	21 (-30)
KOA6-21-5/8	21 (-38,-50)

## 90 DEGREE BACKSHELLS

## SHELL SIZE

KO8-16-3/8	16
KO8-19-1/2	19
KO8-21-5/8	21 (-30)
KOA8-21-5/8	21 (-38,-50)

# STD-K CANNON ORDERING GUIDE

R | S | K | - | 1 9 | - | 2 1 | C | 5 / 8

## COUPLER

BLANK - STANDARD

R - REVERSE COUPLING, EXTERNAL THREADS

## SHELL SIZE

W  
G  
S  
N  
F

## SERIES PREFIX

K

## INSERT ARRANGEMENT

SEE CHART

## SHELL STYLE

21 - STRAIGHT PLUG, SOCKET INSERT

22 - STRAIGHT PLUG, PIN INSERT

23 - 90 DEGREE PLUG, SOCKET INSERT

24 - 90 DEGREE PLUG, PIN INSERT

31S - SMALL FLANGE RECEPTACLE, SOCKET INSERT

31SL - LARGE FLANGE RECEPTACLE, SOCKET INSERT

32S - SMALL FLANGE RECEPTACLE, PIN INSERT

32SL - LARGE FLANGE RECEPTACLE, PIN INSERT

## CABLE CLAMP

C - WITH CABLE CLAMP

## CABLE CLAMP

SEE CHART

# STANDARD K CANNON INSERT CHART

INSERT ARRANGEMENT	TOTAL CONTACTS	20 GA	16 GA	14 GA	10 GA	8 GA	6 GA	4 GA	COAX
WK-M2	2		2						
WK-3	3			3					
WK-C3	3		1		2				
WK-4	4		4						
WK-5	5		5						
WK-6	6		6						
WK-A7	7		7						
WK-8	8	8							
GK-C3	3			1			2		
GK-S3	3				3				
GK-4	4				4				
GK-8	3			3					
GK-S8	8		4		4				
GK-9	9		9						
GK-12	12		12						
SK-S2	2							2	
SK-6	6				6				
SK-A8	8			7			1		
SK-C16	16		14		2				
SK-19	19		19						
SK-24	24	24							
NK-E3	3						3		
NK-L8	8			4		8			
NK-L11	11		1	8	2				
NK-12	12			12					
NK-V17	17		11		6				
NK-L23	23		19	2	2				
NK-27	27		27						
FK-C5C5	5								5
FK-A5C5	5								5
FK-19	19			19					
FK-W20	20								20
FK-32	32		32						
FK-37	37		37						
FK-46	46		46						
FK-75	75	75							

# STD-K CANNON CABLE RANGE CHART

## STRAIGHT BACKSHELLS -21C & -22C

WK-1/4"  
WK-5/16"  
WK-3/8"  
WK-1/2"  
WK-5/8"  
GK-1/2"  
GK-5/8"  
SK-5/8"  
NK-1/2"  
NK-5/8"  
FK-5/8"  
FK-7/8"  
FK-1"

## 90 DEGREE BACKSHELLS -23C & -24C

WK-3/8"  
WK-1/2"  
GK-1/2"  
GK-5/8"  
SK-5/8"  
SK-3/4"  
NK-5/8"  
NK-11/16"  
FK-5/8"

# ARINC-404 DPX ORDERING GUIDE

D P X B M A - 6 7 - 3 3 S - 0 0 0 1

## BASIC PART NUMBER

DPX - ARINC 404

## SHELL SIZE

A - SINGLE SHELL  
B - POLARIZED SHELL

## CLASS

BLANK - SOLDER CONTACTS  
MA - WITH CRIMP CONTACTS  
MB - WITH CRIMP CONTACTS AND REAR GROMMET  
ME - WITH CRIMP CONTACTS, ENVIRONMENTAL SEAL

## INSERT ARRANGEMENT

SEE CHART

## SHELL TYPE

33 - PLUG  
34 - RECEPTACLE

## CONTACT STYLE

P - PIN  
S - SOCKET

## MODIFIER

00 - STANDARD  
01 - WITH CLINCH NUTS (34 SHELL ONLY)  
02 - WITH TABS FOR MOUNTING JUNCTION SHELL  
03 - WITH 100 DEGREE COUNTERSUNK MOUNTING HOLES (33 SHELL ONLY)  
17 - WITH CLINCH NUTS AND TABS FOR MOUNTING JUNCTION SHELL (34 ONLY)  
22 - WITH CLINCH NUTS (33 ONLY)  
23 - WITH FLOATING EYELETS

## POLARIZATION

BLANK - POSTS & KEYS ARE SUPPLIED AS LOOSE KITS  
01-99 POSITIONS AVAILABLE

# ARINC-404 DPX2 ORDERING GUIDE

D P X 2 M A - 6 7 S 6 7 S - 3 3 B - 0 0 0 1

## BASIC PART NUMBER

DPX - ARINC 404

## SHELL SIZE

2 - TWO GANG INSERT

## CLASS

BLANK - SOLDER CONTACTS  
MA - WITH CRIMP CONTACTS  
MB - WITH CRIMP CONTACTS AND REAR GROMMET  
ME - WITH CRIMP CONTACTS, ENVIRONMENTAL SEAL

## INSERT ARRANGEMENT

SIDE 'A' - SEE CHART

## CONTACT STYLE

P - PIN  
S - SOCKET

## SHELL TYPE

33 - PLUG  
34 - RECEPTACLE

## SHELL STYLE

B - ARINC 404

## MODIFIER

00 - STANDARD  
01 - WITH CLINCH NUTS (34 SHELL ONLY)  
02 - WITH TABS FOR MOUNTING JUNCTION SHELL  
03 - WITH 100 DEGREE COUNTERSUNK MOUNTING HOLES (33 SHELL ONLY)  
17 - WITH CLINCH NUTS AND TABS FOR MOUNTING JUNCTION SHELL (34 ONLY)  
22 - WITH CLINCH NUTS (33 ONLY)  
23 - WITH FLOATING EYELETS

## POLARIZATION

BLANK - POSTS & KEYS ARE SUPPLIED AS LOOSE KITS  
01-99 POSITIONS AVAILABLE



# ARINC-404 INSERT CHART

INSERT ARRANGEMENT	TOTAL CONTACTS	22 GA	20 GA	16 GA	12 GA	8 GA	4 GA	COAX
8	8				8			
D8	8			4	4			
10	10		8			2		
A10	10			8			4	
25W3	25		22					3*
26	26			26				
32W2	32		30					2*
32W4	32		24HD	4				4*
40	40		40					
40W1	40		39					1*
45	45		45					
57	57		57					
67	67		64HD	3				
106	106	106						
A106	106	106						

\*COAX CONTACTS ARE NOT SUPPLIED WITH CONNECTORS AND CAN BE ORDERED SEPARATELY ACCORDING TO CABLE GROUP.

# ARINC-404 ACCESSORIES

## CONTACTS

CONTACTS	DESCRIPTION	USED IN
030-1975-007	22 GA PIN	PLUG
031-1113-007	22 GA SKT	RECEPT
030-9081-000	20 GA PIN	RECEPT
031-9134-001	20 GA SKT	PLUG
030-9081-003	20 HD GA PIN	RECEPT
031-9134-004	20 HD GA SKT	PLUG
030-9083-001	16 GA PIN	RECEPT
031-9206-004	16 GA SKT	PLUG
030-1909-001	12 GA PIN	RECEPT
031-1059-001	12 GA SKT	PLUG
030-1908-001	8 GA PIN	RECEPT
031-1154-000	8 GA SKT	PLUG
030-2049-000	4 GA PIN	RECEPT
031-1151-000	4 GA SKT	PLUG

## TOOLS

TOOLS	DESCRIPTION
M81969/1-01	22 GA INS/RMV
M81969/1-02	20 GA INS/RMV
M81969/1-02	20 HD INS/RMV
M81969/1-03	16 GA INS/RMV
M81969/28-02	12 GA INS/RMV
CET-8-2	8 GA RMV
CET-4-8	4 GA RMV
M22520/2-01	CRIMPER 22,20,20 HD
M22520/2-23	TURRET 22
M22520/2-02	TURRET 20
M22520/2-08	TURRET 20 HD
M22520/1-01	TURRET 16,12
M22520/1-02	CRIMPER 16,12
CBT-600	CRIMPER 8,4 GA
CCH8-1	DIE 8 GA
CCH4-1	DIE 4 GA

## BACKSHELLS

## USED ON

DPX2-20745-8	DPX2
DPXA-22017	DPXA

## DUST CAPS

## USED ON

DPXA-60	34A (RECEPT)
DPXB-60	34B (RECEPT)
DPXA-59	33A&B (PLUG)

# ARINC-600 BKA ORDERING GUIDE

B K A D 2 - 3 0 0 - 3 0 0 0 1 - F 0

**BASIC PART NUMBER**

BKA - ARINC 600

**CLASS**

- D - NON - ENVIRONMENTAL, REAR RELEASE
- E - ENVIRONMENTAL, REAR RELEASE
- F - NON - ENVIRONMENTAL, FRONT RELEASE

**SHELL SIZE**

- 1 - MAX. 125 CONTACTS
- 2 - MAX. 400 CONTACTS
- 3 - MAX. 800 CONTACTS

**INSERT ARRANGEMENT**

SEE CHART

**SHELL STYLE**

- 3 - PLUG (RACK SIDE)
- 4 - RECEPTACLE (BOX SIDE)

**CONNECTOR MOUNTING MOD**

- 00 - STANDARD .148 HOLES
- 01 - WITH #6-32 CLINCH NUTS
- 02 - SIZE 1 ONLY, LESS 3 PCB MOUNTING LUGS
- 03 - WITH #4-40 CLINCH NUTS
- 08 - SIZE 2 & 3 ONLY, WITH #4-40 CLINCH NUTS
- 09 - SIZE 2 & 3 ONLY, WITH #6-32 CLINCH NUTS
- 23 - WITH 4 CORNER FLOATING EYELETS

**POLARIZATION POSITION**

- 01 - 99
- BLANK - POSTS & KEYS ARE SUPPLIED AS LOOSE KITS

**MODIFIER**

- BLANK - WITH REAR RELEASE CRIMP CONTACTS
- FO - LESS CONTACTS (NOT MARKED ON CONNECTOR)

# ARINC-600 INSERT CHART

INSERT ARRANGEMENT	SHELL SIZE	22 GA	20 GA	16 GA	12 GA	COAX
AW4	2,3					4 #10
5W4	1		2	1		2 #5
13W2	1	4	3	4		2 #5
60	1	60				
71W1	2,3	70				1 #1
100	2,3	100				
150	2,3	150				

INSERT DESIGNATOR	SHELL SIZE	CAVITY A	CAVITY B	CAVITY C	CAVITY D	CAVITY E	CAVITY F
-005	1			5W2			
-060	1		60				
A060	1	60					
-065	1		60	5W2			
A065	1	60		5W2			
-120	1	60	60				
-125	1	60	60	5W2			
-013	2			13W2			
-071	2		71W1				
A071	2	71W1					
-100	2			100			
-142	2	71W1	71W1				
-155	2		71W1	13W2			
-163	2		150	13W2			
-234	2	150	71W1	13W2			
A234	2	71W1	150	13W2			
250	2		150	100			
250A	2	150		100			
-300	2	150	150				
-313	2	150	150	13W2			
-400	2	150	150	150			
271C	3	4W4	4W4	13W2		150	100
-310	3	71W1	71W1	13W2	71W1	71W1	13W2
-600	3	150	150		150	150	
-626	3	150	150	13W2	150	150	13W2
-713	3	150	150	100	150	150	13W2
A713	3	150	150	13W2	150	150	100
-800	3	150	150	100	150	150	100
-326	3		150	13W2		150	13W2

# ARINC-600 BKA ACCESSORIES

CONTACTS	DESCRIPTION	USED IN
030-2259-000	22 GA PIN	PLUG
031-1287-000	22 GA SKT	RECEPT
030-2273-000	20 GA PIN	RECEPT
031-1302-000	20 GA SKT	PLUG
030-2280-000	16 GA PIN	RECEPT
031-1303-000	16 GA SKT	PLUG
030-2286-000	12 GA PIN	RECEPT
031-1308-000	12 GA SKT	PLUG

TOOLS	DESCRIPTION
M81969/1-01	22 GA INS/RMV
M81969/1-02	20 GA INS/RMV
M81969/1-03	16 GA INS/RMV
M81969/28-02	12 GA INS/RMV
M22520/2-01	CRIMPER 22/20 GA
M22520/2-23	TURRET 22 GA
M22520/2-08	TURRET 20 GA
M22520/1-01	CRIMPER 16/12 GA
M22520/1-02	TURRET 16 GA
M22520/1-11	TURRET 12 GA

DUST CAPS	USED ON	CAVITY	STYLE
025-1121-001	BKAD-1	A,B	PLUG
025-1122-001	BKAD-1	C	PLUG
025-1123-001	BKAD-2,3	A,B	PLUG
025-1124-001	BKAD-2,3	C	PLUG
025-1155-001	BKAD-1	A,B	RECEPT
025-1156-001	BKAD-1	C	RECEPT
025-1157-001	BKAD-2,3	A,B	RECEPT
025-1158-001	BKAD-2,3	C	RECEPT

# DPA-CANNON ORDERING GUIDE

D P A | M A | - 3 2 - 3 3 | S - F O

## BASIC PART NUMBER

DPA - CANNON RACK & PANEL

## CLASS

BLANK - STANDARD, SOLDER CONTACTS

F - FLOAT MOUNTS, SOLDER CONTACTS

MA - WITH CRIMP STYLE CONTACTS

## INSERT ARRANGEMENT

SEE CHART

## SHELL TYPE

33 - PLUG

34 - RECEPTACLE

## CONTACT TYPE

P - PIN

S- SOCKET

## MODIFIER

BLANK - WITH CONTACTS

FO - LESS CONTACTS

# DPA-CANNON INSERT CHART

INSERT ARRANGEMENT	TOTAL CONTACTS	20 GA	14 GA	12 GA	8 GA	4GA	COAX
2*	2					2	
5*	5		4			1	
5*	6	2		2	2		
21C3**	21	18					3
21W3**	21	18					3
24C2**	24	22					2
29W2***	24	22					2
29C1**	29	28					1
29W1***	29	28					1
32	32	32					

\*ONLY AVAILABLE IN SOLDER

\*\*COAX CONTACTS ARE FIXED FOR SOLDER

\*\*\*COAX CONTACTS ARE NOT SUPPLIED MUST BE ORDERED ACCORDING TO COAX CABLE GROUP

# DPA-CANNON ACCESSORIES

## CONTACTS

## DESCRIPTION

M39029/4-110  
M39029/5-115

20 GA PIN  
22 GA SKT

## TOOLS

## DESCRIPTION

M81969/14-02  
M22520/1-01  
M22520/1-02

20 GA INS/RMV  
CRIMPER  
TURRET

## BACKSHELLS

## DESCRIPTION

DPA-20746  
DPA-20746-1

STRAIGHT  
90 DEGREE

## DUST CAPS

## DESCRIPTION

DPA-59  
DPA-60

33-PLUG  
34-RECEPT



# DPA-CANNON ORDERING GUIDE

D P D | M A - 4 0 | - 3 4 | P - 1 B (POS/Y) - F O

## BASIC PART NUMBER

DPD - CANNON RACK & PANEL

## CLASS

BLANK - SOLDER CONTACTS  
MA - CRIMP CONTACTS

## INSERT ARRANGEMENT

SEE CHART

## SHELL TYPE

33 - PLUG  
34 - RECEPTACLE

## CONTACT TYPE

P - PIN  
S - SOCKET

## MOUNTING HOLE MOD

1A - 0.144 DIA  
1B - 0.144 DIA, 100 DEGREE COUNTERSINK  
1G - 0.152 DIA, 82 DEGREE COUNTERSINK  
1L - 0.144 DIA, 82 DEGREE COUNTERSINK

## POLARIZATION

N  
V  
W  
X  
Y  
Z

## MODIFIER

BLANK - WITH CONTACTS  
FO - LESS CONTACTS

# DPD2-CANNON ORDERING GUIDE

D P D 2 MA - 1 5 6 - 3 4 P M - 1 A (POS.Y)

## BASIC PART NUMBER

DPD - CANNON RACK & PANEL

## CLASS

2 - TWO GANG

## CLASS

BLANK - SOLDER CONTACTS  
MA - CRIMP CONTACTS

## INSERT ARRANGEMENT

SEE CAHRT

## SHELL TYPE

33 - PLUG  
34 - RECETACLE

## CONTACT TYPE

P - PIN  
S - SOCKET

## ENGANGING DEVICE

SEE CHART

## MOUNTING HOLE MOD

1A - 0.144 DIA  
1B - 0.144 DIA, 100 DEGREE COUNTERSINK  
1G - 0.152 DIA, 82 DEGREE COUNTERSINK  
1L - 0.144 DIA, 82 DEFREE COUNTERSINK

## POLARIZATION

N  
V  
W  
X  
Y  
Z

## MODIFIER

BLANK - WITH CONTACTS  
FO - LESS CONTACTS

# DPD-CANNON INSERT CHART

SOLDER-INSERT ARRANGEMENT	TOTAL CONTACTS	20 GA	16 GA	14 GA	12 GA	10 GA	8 GA	4 GA	COAX
N10	10		6					4	
AN14	14								14
15C2	15			10		3			2
B20C2	20		12	6					2
G20	20			10		2	8		
23C3	23		20						3
B28	28		28						
32C2	32		28				2		2
40	40		40						
45	45		43			2			
50	50		50						
78	78		78						
90	90		90						
112	112	112							
128	128	128							

CRIMP-INSERT ARRANGEMENT	TOTAL CONTACTS	20 GA	16 GA	14 GA	12 GA	10 GA	8 GA	4 GA	COAX
AJ14	14								14
B28	28		28						
32B2	32		28				2		2
40	40		40						
A44	44	16	17		6		5		
45	45		43			2			
F54	54		48		6				
76	76	73	3						
78	78		78						
112	112	112							

# DPD-CANNON INSERT CHART

DPD2-INSERT DESIGNATOR	CAVITY A	CAVITY B
N20 .....	N10 .....	N10
G48 .....	G20 .....	B28
B56 .....	B28 .....	B28
64 .....	32 .....	32
64C4 .....	32C2 .....	32C2
B68 .....	40 .....	B28
77 .....	45 .....	32
78 .....	50 .....	28
80 .....	40 .....	40
90 .....	45 .....	45
B98C2 .....	B20C2 .....	78
G98 .....	78 .....	G20
H98C2 .....	H20C2 .....	78
100 .....	50 .....	50
A110 .....	32 .....	78
123 .....	45 .....	78
A123 .....	78 .....	45
152 .....	76 .....	76
156 .....	78 .....	78
180 .....	90 .....	90
190 .....	78 .....	112
224 .....	112 .....	112
256 .....	128 .....	128

# DPD-CANNON ACCESSORIES

## CONTACTS

## DESCRIPTION

030-9081-000	20 GA PIN
031-9134-001	20 GA SKT
030-9083-000	16 GA PIN
031-9206-003	16 GA SKT
030-1909-000	12 GA PIN
031-1059-000	12 GA SKT
030-1757-000	10 GA PIN
030-1758-000	10 GA SKT
030-9175-000	8 GA PIN
030-9176-000	8 GA SKT
030-1908-000	8 GA PIN (A44)
030-9201-003	8 GA SKT (A44)

## TOOLS

## DESCRIPTION

M22520/2-01	CRIMPER 20 GA
M22520/2-08	TURRET 20 GA
M22520/1-01	CRIMPER 16,12 GA
M22520/1-02	TURRET 16,12 GA
CET20-8	20 GA INS/RMV
CET16-9	16 GA INS/RMV
CET12-4	12 GA INS/RMV
CET10-1	10 GA INS/RMV
CET8-2	8 GA INS/RMV

## BACKSHELLS

## DESCRIPTION

DPD-11612	-33 SHELL
DPD-12172	-34 SHELL
025-0585-000	DUST CAP

## ENGAGING DEVICES

## DESCRIPTION

## THREAD TYPE

F	FEMALE	1/4-28 UNF-28
CF	FEMALE	5/16-24 UNF-28
DF	FEMALE	5/16-12 QUAD LEAD
M	MALE	1/4-28 UNF-2A
MA	MALE	1/4-28 UNF-2A
CM	MALE	5/16-24 UNF-2A
CMRA	MALE RATCHET LOCK	5/16-24 UNF-2A
DM	MALE 2 9/32" HANDLE	5/16-12 QUAD LEAD
DM-1	MALE 3 11/16" HANDLE	5/16-12 QUAD LEAD
DM-2	MALE 4 13/32" HANDLE	5/16-12 QUAD LEAD
DM-3	MALE 3/16" HEX SKT	5/16-12 QUAD LEAD
DM-7	MALE 5 1/2" HANDLE	5/16-12 QUAD LEAD

# MIL-C-83733 DPK ORDERING GUIDE

D P K A - G 1 3 1 S X A - 7 F O

## BASIC PART NUMBER

DPKA - SMALL SHELL  
DPKA - LARGE SHELL

## CONTACT MODIFIER

G - SIZE 22D CONTACTS (A-131 & B-185 ONLY)  
W - SIZE 22D WIRE WRAP CONTACTS (A-131 & B-185 ONLY)

## INSERT ARRANGEMENT

SEE CHA RT

## CONTACT STYLE

P - PIN  
S - SOCKET

## POLARIZATION (A-MOUNTING STYLE ONLY)

N  
V  
W  
X  
Y  
Z

## MOUNTING STYLE

A-2 MOUNTING HOLES (.197 DIA) & 2 POLARIZATION POSTS  
C-4 SELF-LOCKING BUSHINGS  
F-4 CLINCH NUTS  
G-4 MOUNTING HOLES (.28 DIA)  
H-2 STAGGERED SPRING MOUNTS (PLUG)  
H-2 STAGGERED SELF-LOCKING BUSHINGS (RECEPTACLE)  
K-4 STATIONARY CAPTIVATED SPRING MOUNTS  
M-2 STAGGERED MOUNTING HOLES (.281 DIA)  
X-2 GUIDE PINS & 2 SPRING MOUNTS (PLUG)  
X-2 GUIDE SOCKETS & 2 MOUNTING HOLES (.197 DIA) (RECEPTACLE)  
Y-2 GUIDE SOCKETS & 2 SPRING MOUNTS (PLUG)  
Y-2 GUIDE PINS & 2 MOUNTING HOLES (.197 DIA) (RECEPTACLE)  
Z-2 STAGGERED CLINCH NUTS (RECEPTACLE)

## INSERT MATERIAL MODIFIER

7 - STANDARD ENVIRONMENTAL

## CONTACT MODIFIER

FO - LESS CONTACTS

# MIL-C-83733 INSERT CHART

INSERT ARRANGEMENT	TOTAL CONTACTS	22D GA	22 GA	20 GA	16 GA	12 GA
<b>(DPKA)</b>						
18	18					18
32	32				32	
51	51			51		
G131	131	131				
<b>(DPKB)</b>						
48	48				30	18
64	64				64	
71	71			56		15
78	78			38		
101	101			101		
161	112		161			
G185	185	185				

# MIL-C-83733 ACCESSORIES

## CONTACTS

## DESCRIPTION

M39029/58-360	22D GA PIN
M39029/57-354	22D GA SKT
M39029/11-144	22 GA PIN
M39029/12-148	22 GA SKT
M39029/4-110	20 GA PIN
M39029/5-115	20 GA SKT
M39029/4-111	16 GA PIN
M39029/5-116	16 GA SKT
M39029/4-113	12 GA PIN
M39029/5-118	12 GA SKT

## TOOLS

## DESCRIPTION

M81969/14-01	22D,22 GA INS/RMV
M81969/14-02	20 GA INS/RMV
M81969/14-03	16 GA INS/RMV
M81969/14-04	12 GA INS/RMV
M22520/2-01	CRIMPER 22D,22,20 GA
M22520/2-09	TURRET 22D GA PIN
M22520/2-06	TURRET 22D GA SKT
M22520/2-23	TURRET 22 GA
M22520/2-02	TURRET 20 GA
M22520/1-01	CRIMPER 16,12 GA
M22520/1-02	TURRET 16,12 GA

## DUST CAPS

## USED ON

DPKA-60	DPKA-RECEPT
DPKA-59	DPKA-PLUG
DPKB-60	DPKB-RECEPT
DPKB-59	DPKB-PLUG



# MIL-C-24308 D-SUB ORDERING GUIDE

D B M A M 2 5 P - F 0

## BASIC PART NUMBER

D - D-SUB PREFIX

## SHELL SIZE

A	B	C	D	E
15	25	37	50	9

## CLASS

BLANK - SOLDER STANDARD  
C - CRIMP COMMERCIAL  
MAM - CRIMP MILITARY

## TOTAL CONTACTS

9 -50

## CONTACT STYLE

P - PIN  
S - SOCKET

## MODIFIER

FO - LESS CONTACTS

# MIL-C-24308 D-SUB

## CRIMP D-SUB MILITARY

## COMMERCIAL ALTERNATE

## TOTAL CONTACTS 20 GA

M24308/4-1	DEMAM9P	9
M24308/2-1	DEMAM9P	9
M24308/4-2	DAMAM15P	15
M24308/2-2	DAMAM15P	15
M24308/4-3	DBMAM25P	25
M24308/2-3	DBMAM25P	25
M24308/4-4	DCMAM37P	37
M24308/2-4	DCMAM37S	37
M24308/4-5	DDMAM50P	50
M24308/2-5	DDMAM50S	50

## TOOLS

## TOTAL CONTACTS 20 GA

DEC9P	9
DEC9S	9
DAC15P	15
DAC15S	15
DBC25P	25
DBC25S	25
DCC37P	37
DCC37S	37
DDC50P	50
DDC50S	50

## TOOLS

## TOTAL CONTACTS 20 GA

DE9P	9
DE9S	9
DA15P	15
DA15S	15
DB25P	25
DB25S	25
DC37P	37
DC37S	37
DD50P	50
DD50S	50

# MIL-C-24308 D-SUB ACCESSORIES

## CONTACTS-COMMERCIAL

## DESCRIPTION

030-1952-000	20 GA PIN
030-1953-000	20 GA SKT

## CONTACTS-MILITARY

## DESCRIPTION

M39029/64-369	20 GA PIN
M39029/63-368	20 GA SKT

## TOOLS

## DESCRIPTION

CIET-20HD	INS/RMV
M22520/2-01	CRIMPER
M22520/2-08	TURRET

## FLAT CABLE BACKSHELLS

## SIZE

M85049/48-1-1	E
M85049/48-1-2	A
M85049/48-1-3	B
M85049/48-1-4	C
M85049/48-1-5	D

## BUNDLE CABLE BACKSHELLS

## SIZE

M85049/48-2-1	E
M85049/48-2-2	A
M85049/48-2-3	B
M85049/48-2-4	C
M85049/48-2-5	D

# STANDARD TOOLS

TOOLS	DESCRIPTION	COLOR CODE	GAUGE
MS24256A20	METAL INS	RED	20
MS24256R20	METAL EXT	RED	20
MS24256A16	METAL INS	BLUE	16
MS24256R16	METAL EXT	BLUE	16
MS24256A12	METAL INS	YELLOW	12
MS24256R12	METAL EXT	YELLOW	12

TOOLS	DESCRIPTION	COLOR CODE	GAUGE
MS27495A22M	METAL TWEEZER INS	BLACK	22D
MS27495R22M	METAL TWEEZER EXT	BLACK	22D
MS27495A22	METAL TWEEZER INS	GREEN	22
MS27495R22	METAL TWEEZER EXT	GREEN	22
MS27495A20	METAL TWEEZER INS	RED	20
MS27495R20	METAL TWEEZER EXT	RED	20
MS27495A16	METAL TWEEZER INS	BLUE	16
MS27495R16	METAL TWEEZER EXT	BLUE	16
MS27495A12	METAL TWEEZER INS	YELLOW	12
MS27495R12	METAL TWEEZER EXT	YELLOW	12

TOOLS	DESCRIPTION	COLOR CODE	GAUGE
M81969/1-01	PLASTIC METAL TIP INS/EXT	GREEN/WHITE	22
M81969/1-02	PLASTIC METAL TIP INS/EXT	RED/WHITE	20
M81969/1-03	PLASTIC METAL TIP INS/EXT	LUE/WHITE	16

TOOLS	DESCRIPTION	COLOR CODE	GAUGE
M81969/14-01	PLASTIC INS/EXT	GREEN/WHITE	22
M81969/14-02	PLASTIC INS/EXT	RED/WHITE	20
M81969/14-03	PLASTIC INS/EXT	BLUE/WHITE	16
M81969/14-04	PLASTIC INS/EXT	YELLOW/WHITE	12

TOOLS	DESCRIPTION
M22520/1-01	LARGE HAND CRIMPER
M22520/1-02	STANDARD TURRET
M22520/2-01	SMALL HAND CRIMPER
M22520/2-02	STANDARD TURRET



# NOTES

---

---

---

---

---

---

---

---

---

---

---

---

---

---

---

---

---

---

---

---

---

---

---

*We appreciate your business!*